

**TECHNICON DESIGN GROUP INC.**

1800 N. Perry Street, Suite 102
 Ottawa, Ohio 45875
 Phone: 419.523.5323
 email: info@technicondesigngroup.com

DATE: OCTOBER 4, 2018**PROJECT NUMBER:** 72-2351-17**PROJECT NAME:** HEALTH PARTNER OF WESTERN OHIO - TIFFIN COMMUNITY HEALTH CENTER**INTENT:**

This Addendum provides modifications and clarifications To the Bid Documents dated **08/23/2018**. Bidder shall ascertain prior to submitting its Bid Form that it has received all Addenda issued and shall acknowledge receipt of each Addendum on the Bid Form.

In the event of a conflict between the terms and provisions of this Addendum and the terms and provisions of the Bidding Documents, the terms and provisions of this Addendum shall control. In all other respects, the Bidding Documents shall remain unchanged and in full force and effect.

ITEM	ADD DOCUMENT	CD REFERENCE	DESCRIPTION
GENERAL:			
1	DENTAL EQUIPMENT DRAWINGS		For reference use only, the dental equipment drawings (by others) are included with this addendum.
SPECIFICATIONS:			
2		081416 Flush Wood Doors	2.3.2 DELETE in its entirety and INSERT 2. Species: Natural Birch. 2.3.3 DELETE in its entirety and INSERT 3. Cut: Rotary
SITE:			
3		S/2	Domestic Water Service Pipe is 1 1/2" dia. as noted on sheet S/2, Lettered Notes W1. Coordinate with AQUA. Domestic Water Service pipe can be CTS-plastic. The meter pit can be A.Y. McDonald, able to accommodate a 1 1/2" Neptune meter. Coordinate with AQUA.
4		All Site Plans	All references to GARAGE shall be changed to SHED.
STRUCTURAL:			
5		S101	Keynote #4 should read 2x6 outriggers at 16" o.c.
6	S501a Sketch	S501	Concrete Design Matrix has been added to sheet. (See attached Matrix.)
ARCHITECTURAL:			
7		D101	The M.C. shall remove existing RTU HVAC systems and components as noted by Floor Plan Note D1 on sheet M200. The G.C. shall remove the existing roof curbs and cover the remaining openings as required to keep building weather tight.

8		D101	The G.C. shall remove the remaining +/- 5'x4'-4" area of floor tile at the end of the northwest wing (Unit 3).
9		D101	The G.C. shall remove the remaining of +/- 7'x5'-6" section of carpet at the top landing of the basement stair.
10		A101	Keynote #19, Thermax rigid insulation to be 2" thick.
11		A301	Wall Sections 4, 7, 8, 9 & 10, Thermax rigid insulation to be 2" thick from bottom of floor deck to crawl space ground level.
12	A401a Sketch	A401	Revise 7'-1" to 7'-5" for Vest. 101. See attached sketch A401.
13		A601	Revise Solid Core Wood Doors from Masonite Architectural "Aspiro" series, Cherry, Plain Sliced to Masonite Door " Cendura " series, Wood Species: Natural Birch, Rotary Cut, Factory Finish: Toast, reference door types E and M.
14		I101	Finish Materials Legend, Item DR1 Wood Doors/Masonite Architectural Pattern/Type: Change "Aspiro" Series to "Cendura" Series. Color/Style: Change Cherry, Plain Sliced-Honey to Natural Birch, Rotary Cut-Toast.
MECHANICAL/PLUMBING:			
15		P102	Plumbing Specifications 2.03 Piping, I. & J. Add: Dental Vacuum and air are considered as Level 3 medical gases per the State of Ohio. These Lines must be installed by a medical plumbing contractor and must be inspected by an Ohio State Medical Gas inspector upon rough-in and completion.
16		M101	Question: 1.0 A: Calls for an interface to BAS. Which of the following is acceptable? 1. Operator interface that is capable of interfacing with and scheduling the (3) RTUs and the VVT zones that is <u>not</u> web-based. <u>OR</u> 2. Web-based Supervisory Controller system that will communicate to the DDC controllers via BACnet protocol. Answer: 1. Operator interface that is capable of interfacing with and scheduling the (3) RTUs and the VVT zones that is not web-based.
17		M200	Floor Plan Notes D1: The M.C. shall perform work indicated under Floor Plan Note D1. The M.C. shall leave the existing roof curbs in place. Roof curbs shall be removed by the G.C. per Item #7 of this addenda.
18		M400	Mechanical Specifications Section 1.15, Demolition, Removals, Clean-Up and Touch-Up Add: I. This contractor shall be responsible for securely anchoring all roof mounted equipment to roof curb/steel support structure. Comply with all Local and State Code requirements. All roof curbs supporting equipment shall be secured to roof structure and all roof mounted equipment shall be secured or strapped to curb/steel support structure.

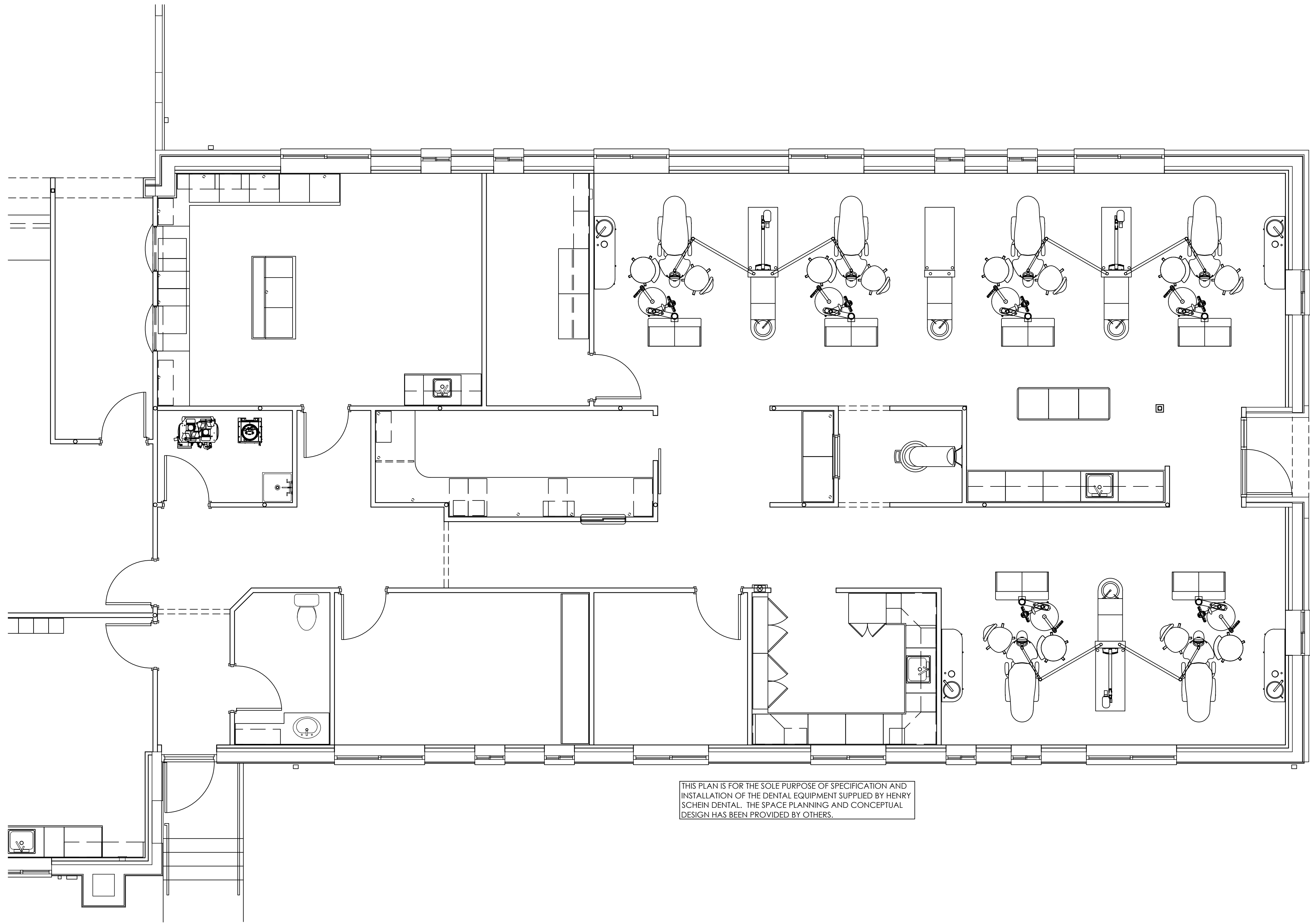
19		M400	Mechanical Specifications Section 2.02 Ductwork & Accessories Part D: In lieu of "spiral lockseam" duct, substitute "longitudinal seams" for all round ductwork fabrication.
20		M400	Mechanical Specifications Section 3.05 Power Ventilators, Part B Manufacturers Add: Johnson Controls/Penn-Barry as acceptable manufacturers.
21		M400	Mechanical Specifications Section 3.08 VVT Dampers, Part A Add: Johnson Controls as an acceptable manufacturer.
ELECTRICAL:			
22	E100 09-27-18 ADDENDUM 02		PLAN SYMBOL LEGEND: Receptacle descriptions have been revised to require <u>all</u> receptacles to be Tamper-Resistant. See revised drawing sheet.
23	E300 09-27-18 ADDENDUM 02		Added circuit numbers to basement light fixtures. See revised drawings sheet.
24	E401 09-27-18 ADDENDUM 02		Remove "TR" (Tamper-Resistant) designation from receptacles in Waiting 102. <u>All</u> receptacles will now be Tamper-Resistant per revisions to Plan Symbol Legend on sheet E100. See revised drawing sheet.
25	E401, E402, E403 09-27-18 ADDENDUM 02		Refer to sheet M400 Mechanical Specifications, Part 3.04, D, Accessories, Item #6: Provide power for unit mounted, factory wired GFCI, receptacles as required.
26	E401, E402, E403 09-27-18 ADDENDUM 02		FLOOR PLAN NOTES: Note #1; Revise 517.3 to 517.13. See revised drawing sheet.
27	E500 09-27-18 ADDENDUM 02		Added basement lighting circuits to Panel LRP:B panel schedule. See revised drawing sheet.

END OF ADDENDUM 02

PREPARED FOR:

HEALTH PARTNERS OF
OHIO - TIFFIN

[illegible]



THIS PLAN IS FOR THE SOLE PURPOSE OF SPECIFICATION AND
INSTALLATION OF THE DENTAL EQUIPMENT SUPPLIED BY HENRY
SCHEIN DENTAL. THE SPACE PLANNING AND CONCEPTUAL
DESIGN HAS BEEN PROVIDED BY OTHERS.

PROPOSED FLOOR PLAN
1/4"=1'-0"

PROJECT:
**HEALTH PARTNERS OF
OHIO - TIFFIN**

LOCATION:
71 S. WASHINGTON STREET, SUITE 1102
TIFFIN, OH 44883

HENRY SCHEIN REP:
SHAWN CLEARY

CENTER:
CINCINNATI, OH

PHONE #:
(513) 616-3151

THIS DOCUMENT HAS BEEN PREPARED AS AN INSTRUMENT OF
PROFESSIONAL SERVICE. **IT IS NOT AN ARCHITECTURAL PLAN**
AND IS NOT INTENDED FOR CONSTRUCTION. THE IDEAS/
DESIGN INCLUDED HEREIN ARE THE SOLE PROPERTY OF HENRY
SCHEIN DENTAL AND ARE PROTECTED UNDER COPYRIGHT.
THESE PLANS MAY NOT BE USED OR REPRODUCED WITHOUT
EXPRESSED WRITTEN CONSENT OF HENRY SCHEIN AND FULL
PAYMENT OF ANY ASSOCIATED DESIGN FEES.
ALL DIMENSIONS ARE SUBJECT TO JOB-SITE VERIFICATION.

DRAWING NAME:
HPO-TIFFIN-1-F

PROJECT START DATE:
06/23/2018

FINALS START DATE:
06/28/2018

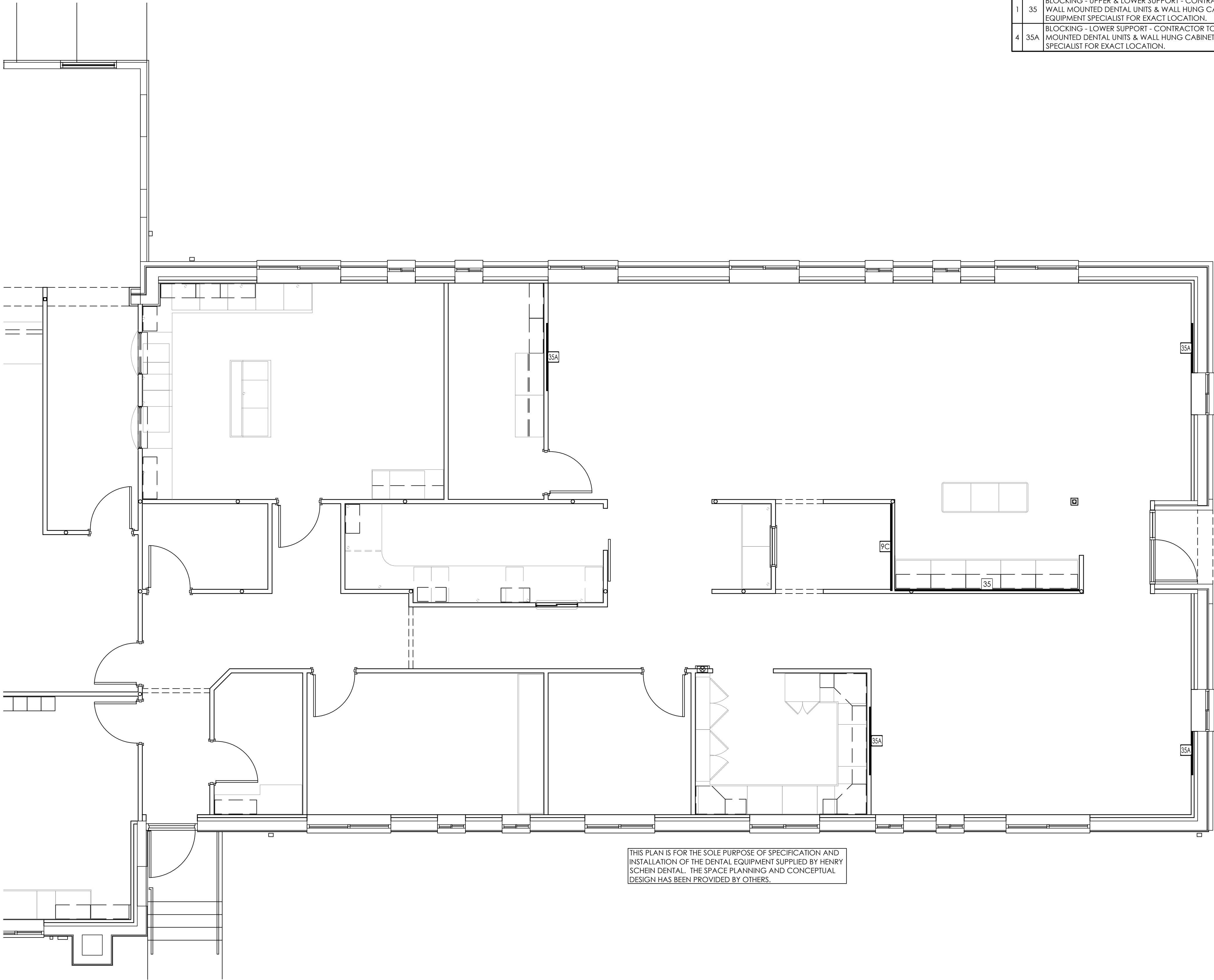
DRAWN BY: TAS
FINALS BY: TAS
CHECKED BY: ---

REVISIONS:	
--/--	---
--/--	---
--/--	---
--/--	---
--/--	---
--/--	---
--/--	---

INT. SQ. FT. = ---

SCALE:
1/4"=1'-0"

SHT. SIZE:
24 x 36



THIS PLAN IS FOR THE SOLE PURPOSE OF SPECIFICATION AND INSTALLATION OF THE DENTAL EQUIPMENT SUPPLIED BY HENRY SCHEIN DENTAL. THE SPACE PLANNING AND CONCEPTUAL DESIGN HAS BEEN PROVIDED BY OTHERS.

DIMENSIONS & REINFORCEMENT SPECIFICATIONS
1/4"=1'-0"

REINFORCEMENT SPECIFICATIONS

QUANTITY	SPEC. NUMBER	DESCRIPTION
1	9C	PANORAMIC AND/OR CEPHALOMETRIC XRAY/ CONE BEAM UNIT - SUPPLIED AND INSTALLED BY HENRY SCHEIN DENTAL. REQUIRES A 3 WIRE GROUNDED CIRCUIT.
1	35	BLOCKING - UPPER & LOWER SUPPORT - CONTRACTOR TO SUPPLY AND INSTALL BACKING FOR WALL MOUNTED DENTAL UNITS & WALL HUNG CABINETS. SEE HENRY SCHEIN DENTAL EQUIPMENT SPECIALIST FOR EXACT LOCATION.
4	35A	BLOCKING - LOWER SUPPORT - CONTRACTOR TO SUPPLY AND INSTALL BACKING FOR WALL MOUNTED DENTAL UNITS & WALL HUNG CABINETS. SEE HENRY SCHEIN DENTAL EQUIPMENT SPECIALIST FOR EXACT LOCATION.

CONSTRUCTION NOTES

1. THIS SPECIFICATION SHEET IS INTENDED AS A GUIDE FOR TRADESMEN. THE FLOOR PLANS ENCLOSED HEREIN ARE SUGGESTIONS FOR THE PLACEMENT OF DENTAL EQUIPMENT. THEY ARE NOT INTENDED FOR CONSTRUCTION.
2. VERIFY ALL DIMENSIONS WITH HENRY SCHEIN DENTAL REP. ON JOBSITE. ON SITE MODIFICATIONS MAY NEED TO BE DONE BY CONTRACTOR, BUT SHOULD BE VERIFIED BY ALL PARTIES INVOLVED.
3. 5/8" GYPSUM WALLBOARD IS RECOMMENDED THROUGHOUT THE OFFICE TO PROVIDE SOUND ATTENUATION & ADDITIONAL PROTECTION AGAINST X-RAY SCATTER RADIATION.

WALL LEGEND

NEW REINFORCEMENT PLACED FOR WALL-MOUNTED EQUIPMENT. SEE "REINFORCEMENT SPECIFICATION SCHEDULE" FOR MORE INFORMATION.

INTEGRATED
DESIGN STUDIO²
HENRY SCHEIN[®]
DENTAL

10920 W LINCOLN AVE. WEST ALLIS, WI 53227

PROJECT:
HEALTH PARTNERS OF
OHIO - TIFFIN

LOCATION:
71 S. WASHINGTON STREET, SUITE 1102
TIFFIN, OH 44883

HENRY SCHEIN REP:
SHAWN CLEARY

CENTER:
CINCINNATI, OH

PHONE #:
(513) 616-3151

THIS DOCUMENT HAS BEEN PREPARED AS AN INSTRUMENT OF PROFESSIONAL SERVICE. **IT IS NOT AN ARCHITECTURAL PLAN AND IS NOT INTENDED FOR CONSTRUCTION.** THE IDEAS/ DESIGN INCLUDED HEREIN ARE THE SOLE PROPERTY OF HENRY SCHEIN DENTAL AND ARE PROTECTED UNDER COPYRIGHT. THESE PLANS MAY NOT BE USED OR REPRODUCED WITHOUT EXPRESSED WRITTEN CONSENT OF HENRY SCHEIN AND FULL PAYMENT OF ANY ASSOCIATED DESIGN FEES. **ALL DIMENSIONS ARE SUBJECT TO JOB-SITE VERIFICATION.**

DRAWING NAME:
HPO-TIFFIN-1-F

PROJECT START DATE:
06/23/2018

FINALS START DATE:
06/28/2018

DRAWN BY: TAS
FINALS BY: TAS
CHECKED BY: ---

REVISIONS:	
--/--	---
--/--	---
--/--	---
--/--	---
--/--	---
--/--	---
--/--	---

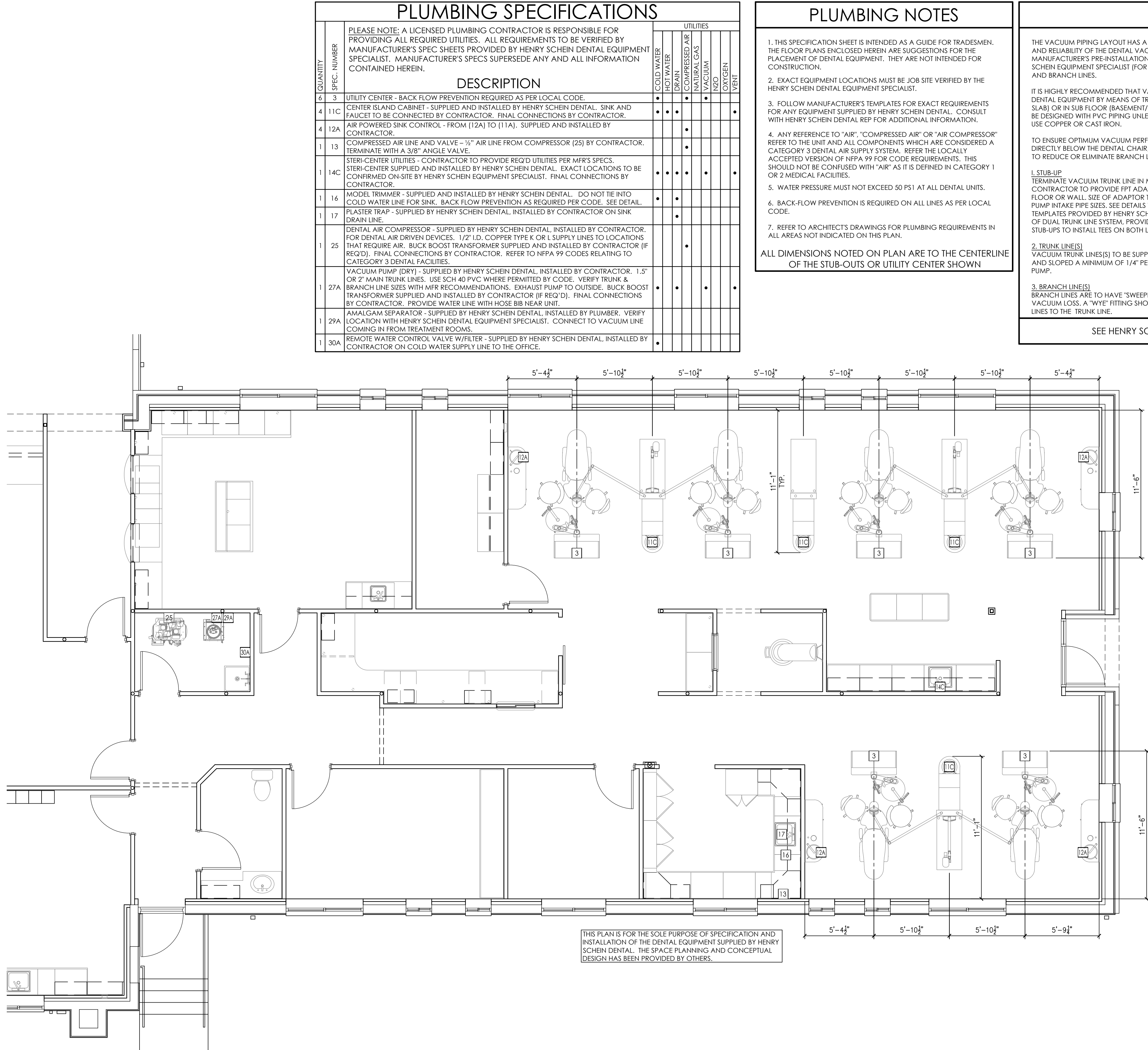
INT.SQ.FT.= ---

SCALE:
1/4"=1'-0"

SHT. SIZE:
24 x 36

REINFORCEMENT
PLAN

SA.1



PROPOSED PLUMBING PLAN
1/4"=1'-0"

PLUMBING SPECIFICATIONS			UTILITIES						
QUANTITY	SPEC. NUMBER	DESCRIPTION	COLD WATER	HOT WATER	DRAIN	COMPRESSED AIR	NATURAL GAS	VACUUM	OXYGEN
6	3	UTILITY CENTER - BACK FLOW PREVENTION REQUIRED AS PER LOCAL CODE.							
4	11C	CENTER ISLAND CABINET - SUPPLIED AND INSTALLED BY HENRY SCHEIN DENTAL. SINK AND FAUCET TO BE CONNECTED BY CONTRACTOR. FINAL CONNECTIONS BY CONTRACTOR.							
4	12A	AIR POWERED SINK CONTROL - FROM (12A) TO (11A). SUPPLIED AND INSTALLED BY CONTRACTOR.							
1	13	COMPRESSED AIR LINE AND VALVE - 1/2" AIR LINE FROM COMPRESSOR (25) BY CONTRACTOR. TERMINATE WITH A 3/8" ANGLE VALVE.							
1	14C	STERI-CENTER UTILITIES - CONTRACTOR TO PROVIDE REQ'D UTILITIES PER MFR'S SPECS. STERI-CENTER SUPPLIED AND INSTALLED BY HENRY SCHEIN DENTAL. EXACT LOCATIONS TO BE CONFIRMED ON-SITE BY HENRY SCHEIN EQUIPMENT SPECIALIST. FINAL CONNECTIONS BY CONTRACTOR.							
1	16	MODEL TRIMMER - SUPPLIED AND INSTALLED BY HENRY SCHEIN DENTAL. DO NOT TIE INTO COLD WATER LINE FOR SINK. BACK FLOW PREVENTION AS REQUIRED PER CODE. SEE DETAIL.							
1	17	PLASTER TRAP - SUPPLIED BY HENRY SCHEIN DENTAL, INSTALLED BY CONTRACTOR ON SINK DRAIN LINE.							
1	25	DENTAL AIR COMPRESSOR - SUPPLIED BY HENRY SCHEIN DENTAL, INSTALLED BY CONTRACTOR. FOR DENTAL AIR DRIVEN DEVICES. 1/2" I.D. COPPER TYPE K OR L SUPPLY LINES TO LOCATIONS THAT REQUIRE AIR. BUCK BOOST TRANSFORMER SUPPLIED AND INSTALLED BY CONTRACTOR (IF REQ'D). FINAL CONNECTIONS BY CONTRACTOR. REFER TO NFPA 99 CODES RELATING TO CATEGORY 3 DENTAL FACILITIES.							
1	27A	VACUUM PUMP (DRY) - SUPPLIED BY HENRY SCHEIN DENTAL, INSTALLED BY CONTRACTOR. 1.5" OR 2" MAIN TRUNK LINES. USE SCH 40 PVC WHERE PERMITTED BY CODE. VERIFY TRUNK & BRANCH LINE SIZES WITH MFR RECOMMENDATIONS. EXHAUST PUMP TO OUTSIDE. BUCK BOOST TRANSFORMER SUPPLIED AND INSTALLED BY CONTRACTOR (IF REQ'D). FINAL CONNECTIONS BY CONTRACTOR. PROVIDE WATER LINE WITH HOSE BIB NEAR UNIT.							
1	29A	AMALGAM SEPARATOR - SUPPLIED BY HENRY SCHEIN DENTAL, INSTALLED BY PLUMBER. VERIFY LOCATION WITH HENRY SCHEIN DENTAL EQUIPMENT SPECIALIST. CONNECT TO VACUUM LINE COMING IN FROM TREATMENT ROOMS.							
1	30A	REMOTE WATER CONTROL VALVE W/FILTER - SUPPLIED BY HENRY SCHEIN DENTAL, INSTALLED BY CONTRACTOR ON COLD WATER SUPPLY LINE TO THE OFFICE.							

- ### PLUMBING NOTES
- THIS SPECIFICATION SHEET IS INTENDED AS A GUIDE FOR TRADESMEN. THE FLOOR PLANS ENCLOSED HEREIN ARE SUGGESTIONS FOR THE PLACEMENT OF DENTAL EQUIPMENT. THEY ARE NOT INTENDED FOR CONSTRUCTION.
 - EXACT EQUIPMENT LOCATIONS MUST BE JOB SITE VERIFIED BY THE HENRY SCHEIN DENTAL EQUIPMENT SPECIALIST.
 - FOLLOW MANUFACTURER'S TEMPLATES FOR EXACT REQUIREMENTS FOR ANY EQUIPMENT SUPPLIED BY HENRY SCHEIN DENTAL. CONSULT WITH HENRY SCHEIN DENTAL REP FOR ADDITIONAL INFORMATION.
 - ANY REFERENCE TO "AIR", "COMPRESSED AIR" OR "AIR COMPRESSOR" REFER TO THE UNIT AND ALL COMPONENTS WHICH ARE CONSIDERED A CATEGORY 3 DENTAL AIR SUPPLY SYSTEM. REFER THE LOCALLY ACCEPTED VERSION OF NFPA 99 FOR CODE REQUIREMENTS. THIS SHOULD NOT BE CONFUSED WITH "AIR" AS IT IS DEFINED IN CATEGORY 1 OR 2 MEDICAL FACILITIES.
 - WATER PRESSURE MUST NOT EXCEED 50 PS1 AT ALL DENTAL UNITS.
 - BACK-FLOW PREVENTION IS REQUIRED ON ALL LINES AS PER LOCAL CODE.
 - REFER TO ARCHITECT'S DRAWINGS FOR PLUMBING REQUIREMENTS IN ALL AREAS NOT INDICATED ON THIS PLAN.
- ALL DIMENSIONS NOTED ON PLAN ARE TO THE CENTERLINE OF THE STUB-OUTS OR UTILITY CENTER SHOWN

VACUUM NOTES

THE VACUUM PIPING LAYOUT HAS A LARGE EFFECT ON THE EFFICIENCY AND RELIABILITY OF THE DENTAL VACUUM SYSTEM. REFER TO MANUFACTURER'S PRE-INSTALLATION GUIDE PROVIDED BY HENRY SCHEIN EQUIPMENT SPECIALIST (FOR SPECIFIC SIZING OF STUB-UP, TRUNK, AND BRANCH LINES.

IT IS HIGHLY RECOMMENDED THAT VACUUM LINES RUN UNDERNEATH DENTAL EQUIPMENT BY MEANS OF TRENCHING/ CORING (CONCRETE SLAB) OR IN SUB FLOOR (BASEMENT/ CRAWL SPACE). ALL LINES ARE TO BE DESIGNED WITH PVC PIPING UNLESS DICTATED BY LOCAL CODES TO USE COPPER OR CAST IRON.

TO ENSURE OPTIMUM VACUUM PERFORMANCE, INSTALL MAIN LINE DIRECTLY BELOW THE DENTAL CHAIR, CABINET OR WALL JUNCTION BOX TO REDUCE OR ELIMINATE BRANCH LINE RUNS WHEREVER POSSIBLE.

1. STUB-UP
TERMINATE VACUUM TRUNK LINE IN MECHANICAL ROOM. PLUMBING CONTRACTOR TO PROVIDE FPT ADAPTOR ON END OF STUB-OUT FROM FLOOR OR WALL. SIZE OF ADAPTOR TO BE DETERMINED BY TRUNK AND PUMP INTAKE PIPE SIZES. SEE DETAILS THIS SET & MANUFACTURER TEMPLATES PROVIDED BY HENRY SCHEIN EQUIPMENT REP. IN THE CASE OF DUAL TRUNK LINE SYSTEM, PROVIDE ENOUGH SPACE BETWEEN STUB-UPS TO INSTALL TEES ON BOTH LINES.

2. TRUNK LINE(S)
VACUUM TRUNK LINE(S) TO BE SUPPORTED EVERY 6'-0" TO PREVENT SAG AND SLOPED A MINIMUM OF 1/4" PER 10'-0" TOWARD THE VACUUM PUMP.

3. BRANCH LINE(S)
BRANCH LINES ARE TO HAVE "SWEEPING" 90 DEGREE TURNS TO AVOID VACUUM LOSS. A "WYE" FITTING SHOULD BE USED TO JOIN BRANCH LINES TO THE TRUNK LINE.

SPECIAL NOTE:
IF VACUUM LINES ENCR OACH ON EITHER A WALL OR COLUMN FOOTING, USE 45 DEGREE ELBOWS TO PIPE AROUND FOOTING SO PIPE REACHES PROPER LOCATION.

BRANCH LINE CONFIGURATION

SEE HENRY SCHEIN REP FOR MANUFACTURER'S RECOMMENDED VACUUM LINE LAYOUT

INTEGRATED
DESIGN STUDIOTM

HENRY SCHEIN[®]
DENTAL

10720 W LINCOLN AVE. WEST ALLIS, WI 53227

HEALTH PARTNERS OF
OHIO - TIFFIN

71 S. WASHINGTON STREET, SUITE 1102
TIFFIN, OH 44883

PROJECT:
HENRY SCHEIN REP:
SHAWN CLEARY

CENTER:
CINCINNATI, OH

PHONE #:
(513) 616-3151

THIS DOCUMENT HAS BEEN PREPARED AS AN INSTRUMENT OF PROFESSIONAL SERVICE. IT IS NOT AN ARCHITECTURAL PLAN AND IS NOT INTENDED FOR CONSTRUCTION. THE IDEAS/DESIGN INCLUDED HEREIN ARE THE SOLE PROPERTY OF HENRY SCHEIN DENTAL AND ARE PROTECTED UNDER COPYRIGHT. THESE PLANS MAY NOT BE USED OR REPRODUCED WITHOUT EXPRESSED WRITTEN CONSENT OF HENRY SCHEIN AND FULL PAYMENT OF ANY ASSOCIATED DESIGN FEES.
ALL DIMENSIONS ARE SUBJECT TO JOB-SITE VERIFICATION.

DRAWING NAME:
HPO-TIFFIN-1-F

PROJECT START DATE:
06/23/2018

FINALS START DATE:
06/28/2018

DRAWN BY:
TAS

FINALS BY:
TAS

CHECKED BY:

REVISIONS:

---/---/---	---
---/---/---	---
---/---/---	---
---/---/---	---
---/---/---	---
---/---/---	---
---/---/---	---

INT.SQ.FT.=

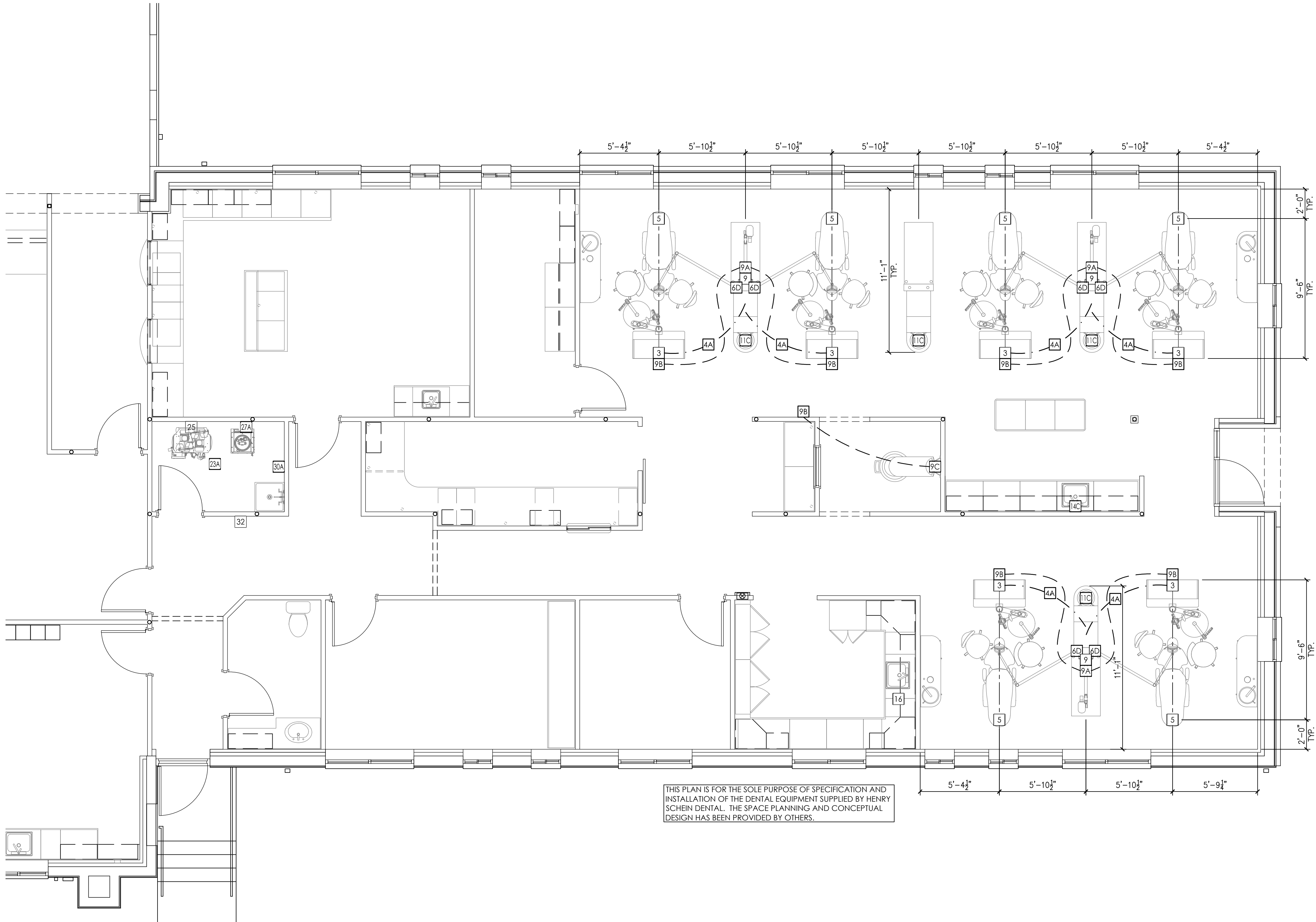
SCALE:
1/4"=1'-0"

SHT. SIZE:
24 x 36

DENTAL PLUMBING
PLAN

SP.1

© 2018 by HENRY SCHEIN, INC.



PROPOSED ELECTRICAL PLAN
1/4"=1'-0"

ELECTRICAL NOTES

1. THIS SPECIFICATION SHEET IS INTENDED AS A GUIDE FOR TRADESMEN. THE FLOOR PLANS ENCLOSED HEREIN ARE SUGGESTIONS FOR THE PLACEMENT OF DENTAL EQUIPMENT. THEY ARE NOT INTENDED FOR CONSTRUCTION.
2. EXACT EQUIPMENT LOCATIONS MUST BE JOB SITE VERIFIED BY THE HENRY SCHEIN DENTAL EQUIPMENT SPECIALIST.
3. FOLLOW MANUFACTURER'S TEMPLATES FOR EXACT REQUIREMENTS FOR ANY EQUIPMENT SUPPLIED BY HENRY SCHEIN DENTAL. CONSULT WITH HENRY SCHEIN DENTAL REP FOR ADDITIONAL INFORMATION.
4. GFCI PROTECTION OR REDUNDANT GROUND IN DENTAL CHAIR RECEPTACLES, DENTAL UTILITY CABINETS AND ANY OTHER AREAS REQUIRED BY LOCAL CODE IS THE RESPONSIBILITY OF THE ELECTRICAL CONTRACTOR.
5. ADDITIONAL CONVENIENCE OUTLETS REQUIRED ON JOBSITE ARE THE RESPONSIBILITY OF ELECTRICAL CONTRACTORS. FOLLOW LOCAL CODE RESTRICTIONS.
6. ALL COMPUTER NETWORKING AND WORKSTATIONS MUST BE SPECIFIED BY CUSTOMER'S COMPUTER SUPPLIER. IF HENRY SCHEIN WILL BE SUPPLYING THE COMPUTER NETWORKING SYSTEM, SEE SHEET SE.2 FOR THE OFFICE AUTOMATION PLAN.
7. CONTRACTOR TO PROVIDE AND INSTALL ALL EXIT SIGNS, EMERGENCY LIGHTING AND FIRE SUPPRESSION & DETECTION SYSTEMS AS PER ARCHITECT'S DRAWINGS AND LOCAL CODE.
8. REFER TO ARCHITECT'S DRAWINGS FOR ELECTRICAL REQUIREMENTS IN ALL AREAS NOT INDICATED ON THIS PLAN.

ALL DIMENSIONS NOTED ON PLAN ARE TO THE CENTERLINE OF THE JUNCTION BOX OR UTILITY CENTER SHOWN

*SPECIFICATIONS MAY INCLUDE DATA, SEE ELECTRICAL SCHEDULE THIS SHEET

ELECTRICAL SPECIFICATIONS

QUANTITY	SPEC. NUMBER	DESCRIPTION	UTILITIES		
			POWER	DEDICATED CIRCUIT	LOW VOLTAGE CONTROL DATA DROP
6	4A	UTILITY CENTER - BACK FLOW PREVENTION REQUIRED AS PER LOCAL CODE.	115V		
6	4A	2" CONDUIT - SUB-FLOOR PIPE CHASE WITH PULL-STRING SUPPLIED & INSTALLED BY CONTRACTOR. SWEEPING 90 DEGREE BENDS, STUB-UP FLUSH WITH SUB-FLOOR. MARK LOCATION AT FINISH.			
6	5	DENTAL CHAIR RECEPTACLE - SUPPLIED & INSTALLED BY CONTRACTOR.	115V		
6	6D	DENTAL LIGHT (CABINET MOUNTED) - TIED IN AT POWER FOR CENTER CABINET (11C). SUPPLIED AND INSTALLED BY HENRY SCHEIN DENTAL.	115V		
3	9	ISLAND CABINET MOUNTED INTRAORAL X-RAY HEAD, ARM, AND WALL BRACKET - CONTRACTOR TO PROVIDE POWER AT LOCATION SHOWN ON ISLAND CABINET DETAIL. X-RAY UNIT SUPPLIED AND INSTALLED BY HENRY SCHEIN DENTAL. REQUIRES A 3 WIRE GROUNDED CIRCUIT.	115V	20A	
3	9A	X-RAY MASTER CONTROL - CONTRACTOR TO SUPPLY AND INSTALL PIPE CHASE WITH PULL-STRING TO (9) LOCATION WHEN (9A) IS REMOTE. VERIFY SUPPLIER OF WIRING WITH HENRY SCHEIN EQUIPMENT SPECIALIST. FINAL CONNECTION BY HENRY SCHEIN DENTAL.			•
7	9B	X-RAY REMOTE EXPOSURE BUTTON - CONTRACTOR TO SUPPLY AND INSTALL PIPE CHASE WITH PULL-STRING TO (9A) OR (9C) LOCATION. VERIFY SUPPLIER OF EXPOSURE BUTTON AND WIRING WITH HENRY SCHEIN EQUIPMENT SPECIALIST. FINAL CONNECTION BY HENRY SCHEIN DENTAL.			•
1	9C	PANORAMIC AND/OR CEPHALOMETRIC XRAY/ CONE BEAM UNIT - SUPPLIED AND INSTALLED BY HENRY SCHEIN DENTAL. REQUIRES A 3 WIRE GROUNDED CIRCUIT.	115V & 230V	20A (X2)	•
4	11C	CENTER ISLAND CABINET - SUPPLIED AND INSTALLED BY HENRY SCHEIN DENTAL. SINK AND FAUCET TO BE CONNECTED BY CONTRACTOR. FINAL CONNECTIONS BY CONTRACTOR.	115V	20A	
1	14C	STERI-CENTER UTILITIES - CONTRACTOR TO PROVIDE REQ'D UTILITIES PER MFR'S SPECS. STERI-CENTER SUPPLIED AND INSTALLED BY HENRY SCHEIN DENTAL. EXACT LOCATIONS TO BE CONFIRMED ON-SITE BY HENRY SCHEIN EQUIPMENT SPECIALIST. FINAL CONNECTIONS BY CONTRACTOR.	SEE MFR. SPECS	•	
1	16	MODEL TRIMMER - SUPPLIED AND INSTALLED BY HENRY SCHEIN DENTAL. DO NOT TIE INTO COLD WATER LINE FOR SINK. BACK FLOW PREVENTION AS REQUIRED PER CODE. SEE DETAIL.	115V		
1	23A	EXHAUST FAN FOR DENTAL MECHANICAL CLOSET - SUPPLIED AND INSTALLED BY CONTRACTOR. A THERMOSTAT CONTROLLED FAN IS REQUIRED TO KEEP ROOM TEMPERATURE WITHIN THE EQUIPMENT MANUFACTURER'S RECOMMENDED OPERATING TEMPERATURE RANGE. FAN OUTPUT (CFM) TO BE DETERMINED BY ARCHITECT/ENGINEER. VENT TO OUTSIDE.	115V	•	
1	25	DENTAL AIR COMPRESSOR - SUPPLIED BY HENRY SCHEIN DENTAL. INSTALLED BY CONTRACTOR. FOR DENTAL AIR DRIVEN DEVICES. 1/2" I.D. COPPER TYPE K OR L SUPPLY LINES TO LOCATIONS THAT REQUIRE AIR. BUCK BOOST TRANSFORMER SUPPLIED AND INSTALLED BY CONTRACTOR (IF REQ'D). FINAL CONNECTIONS BY CONTRACTOR. REFER TO NFPA 99 CODES RELATING TO CATEGORY 3 DENTAL FACILITIES.	230V	VARY	•
1	27A	VACUUM PUMP (DRY) - SUPPLIED BY HENRY SCHEIN DENTAL. INSTALLED BY CONTRACTOR. 1.5" OR 2" MAIN TRUNK LINES. USE SCH 40 PVC WHERE PERMITTED BY CODE. VERIFY TRUNK & BRANCH LINE SIZES WITH MFR RECOMMENDATIONS. EXHAUST PUMP TO OUTSIDE. BUCK BOOST TRANSFORMER SUPPLIED AND INSTALLED BY CONTRACTOR (IF REQ'D). FINAL CONNECTIONS BY CONTRACTOR. PROVIDE WATER LINE WITH HOSE BIB NEAR UNIT.	230V	VARY	•
1	30A	REMOTE WATER CONTROL VALVE W/FILTER - SUPPLIED BY HENRY SCHEIN DENTAL. INSTALLED BY CONTRACTOR ON COLD WATER SUPPLY LINE TO THE OFFICE.	115V		•
1	32	REMOTE PANEL (AIR, WATER, & VAC) - SUPPLIED BY HENRY SCHEIN DENTAL. INSTALLED BY CONTRACTOR 60" A.F.F. CONTRACTOR TO SUPPLY AND INSTALL 24V CONTROL WIRING PER MFR SPECS.			•

THIS DOCUMENT HAS BEEN PREPARED AS AN INSTRUMENT OF PROFESSIONAL SERVICE. **IT IS NOT AN ARCHITECTURAL PLAN AND IS NOT INTENDED FOR CONSTRUCTION.** THE IDEAS/DESIGN INCLUDED HEREIN ARE THE SOLE PROPERTY OF HENRY SCHEIN DENTAL AND ARE PROTECTED UNDER COPYRIGHT. THESE PLANS MAY NOT BE USED OR REPRODUCED WITHOUT EXPRESSED WRITTEN CONSENT OF HENRY SCHEIN AND FULL PAYMENT OF ANY ASSOCIATED DESIGN FEES.
ALL DIMENSIONS ARE SUBJECT TO JOB-SITE VERIFICATION.

DRAWING NAME:
HPO-TIFFIN-1-F

PROJECT START DATE:
06/23/2018

FINALS START DATE:
06/28/2018

DRAWN BY: TAS
FINALS BY: TAS
CHECKED BY: ---

REVISIONS:	
---/---/---	---
---/---/---	---
---/---/---	---
---/---/---	---
---/---/---	---
---/---/---	---
---/---/---	---

INT.SQ.FT.= ---

SCALE: 1/4"=1'-0" SHT. SIZE: 24 x 36

DENTAL
ELECTRICAL PLAN

SE.1

CONCRETE MIX DESIGN MATRIX											
1	INTENDED USE	f'c (ksi) [1]	Conc. Type [2]	Max. W/CM Ratio [3a] [3b]	Min. Cem. Mtl. (3/cy) [4]	Max. Aggr. Size (in) [5a] [5b]	Sump Limits (in.) [6]	Total Air Limits (%) [7]	Cement Type	Req'd. Admix. [8]	Other Rqrmts. [9]
2	INTERIOR SLABS ON GRADE	4	NW	0.5	564	1	4	0	I		
3	INTERIOR DECK SLABS	4	NW	0.46	564	>1/2"	5	0	I		WRA
4	EXTERIOR CONCRETE WALKS & CURBS	4	NW	0.45	564	1	4	6	I	AE	NOTE "A"

Concrete plant, ready mix trucks and all materials must meet or exceed O.D.O.T. standards.

NOTES:

[1] Strength: Proportion mixed to attain compressive strength indicated 28 days, unless higher strengths are specified

[2] Provide normal weight (NW) concrete as indicated.

[3a] W/CM is the ratio of the weight of water to the weight of cementitious materials (Portland cement). The weight of water includes all free water in the aggregates at the time of batching.

[3b] GGBFS at 20% replacement of Type 1 Cement per ASTM C989. No fly ash allowed.

[4] Minimum cementitious materials is minimum weight Portland cement. Provide not less than 517 lbs. of cementitious material per cubic yard for slip-formed concrete elements.

3/4" = No. 67 aggregate

1" = No. 57 aggregate,

≥ 1/2" = No. 8 aggregate

[5b] For fine aggregate sizes, provide natural sand that meets ASTM C33. No manufactured sand or agriculture lime permitted.

[6] When slump is listed as maximum, tolerance is plus 0" and minus 2- 1/2". Slump for concrete with HRWRA (superplasticizer) shall be 8" maximum.

[7] Total air contents listed include both entrained and entrapped air ± 1.5%.

[8] Abbreviations for admixtures are as follows:

AE = Air-entrained admixture

WRA = Water reducing admixture (Plasticizer for pumping - optional)

[9] Other requirements are as follows:

NOTE A: ODOT class C, Option 3 (20% max. slag)

END OF APPENDIX

BUILDING ALTERATIONS
HEALTH PARTNERS OF WESTERN OHIO
1344 W. SENECA AVE.
TIFFIN, OH 44883



TECHNICON DESIGN GROUP, INC.

1800 N. Perry St., Ste. 102 419 523 5323
Ottawa, Ohio 45875 FAX 523 9441

DRAWN BY KW

CHECKED TJH

DATE 10-17

SCALE AS NOTED

JOB NO. 72-2351-17

PAGE

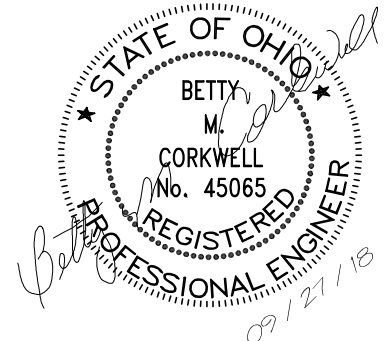
S501

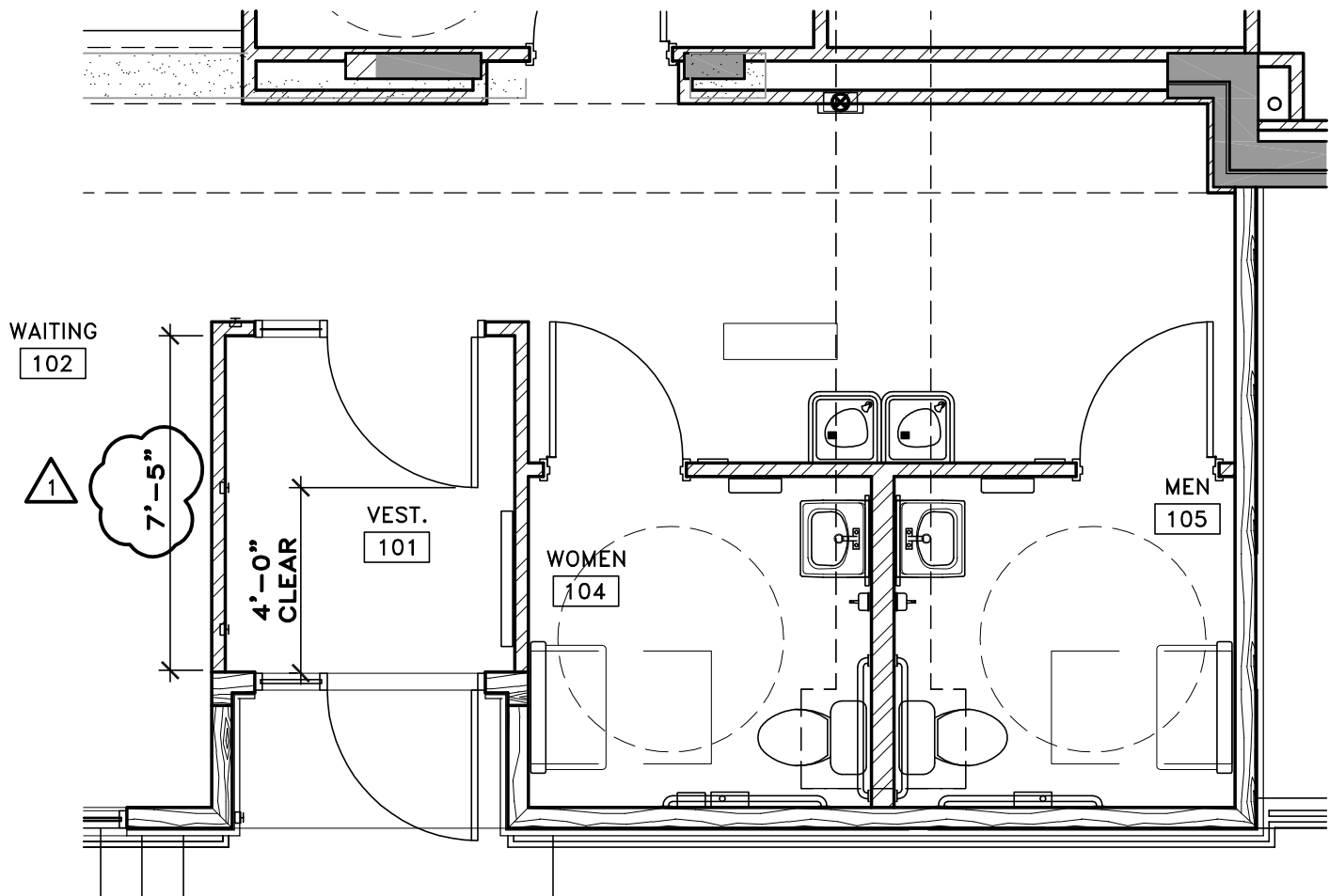
ISSUE DATE

09-27-18

ADDENDUM 2

S501a





BUILDING ALTERATIONS
HEALTH PARTNERS OF WESTERN OHIO
1344 W. SENECA AVE.
TIFFIN, OH 44883



TECHNICON DESIGN GROUP, INC.

1800 N. Perry St., Ste. 102 419 523 5323
 Ottawa, Ohio 45875 FAX 523 9441

DRAWN BY KW

CHECKED TJH

DATE 10-17

SCALE AS NOTED

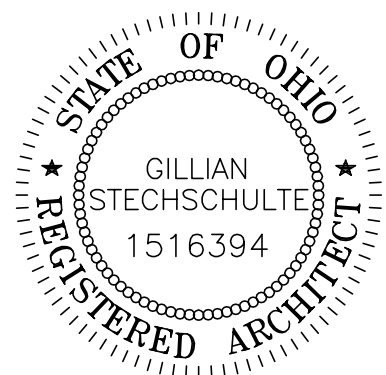
JOB NO. 72-2351-17

PAGE ISSUE DATE

A401a 09-27-18

ADDENDUM

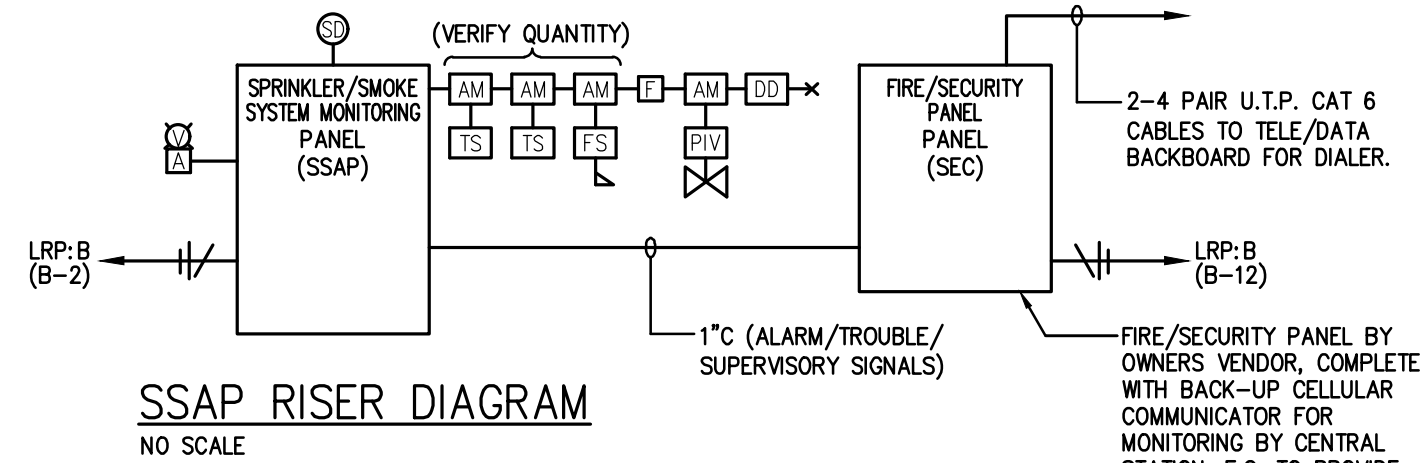
2



Gillian Stechschulte
 License #ARC1516394
 Expiration Date 12/31/19

PLAN SYMBOL LEGEND	
SYMBOL	DESCRIPTION
	INDICATES CONDUIT ABOVE GRADE, SURFACE MOUNTED OR CONCEALED INSIDE THE BUILDING SURFACE. EXPOSED CONDUIT ON THE BUILDING EXTERIOR WILL NOT BE ACCEPTED.
	INDICATES CONDUIT BELOW GRADE OR UNDER FLOOR.
	INDICATES CONDUCTOR IN CONDUIT, QUANTITY AS SHOWN.
	INDICATES PHASE, NEUTRAL AND GROUND CONDUCTORS IN CONDUIT.
	INDICATES (2) PHASE, NEUTRAL AND GROUND CONDUCTORS IN CONDUIT.
	HOME RUN TO SOURCE PANELBOARD OR CONTROL PANEL.
	JUNCTION BOX BLANK COVER.
	MOTOR, HORSEPOWER AND VOLTAGE AS SCHEDULED.
	EQUIPMENT CONTROL PANEL. WIRING TO LINE TERMINALS BY E.C.
	PACKAGED MOTOR STARTER PANEL FURNISHED WITH EQUIPMENT, WIRING TO LINE TERMINALS BY E.C.
	PACKAGED MOTOR STARTER PANEL FURNISHED WITH EQUIPMENT, BUILT-IN SAFETY DISCONNECT. WIRING TO LINE TERMINALS BY E.C.
	MANUAL MOTOR SAFETY DISCONNECT SWITCH, HORSEPOWER RATED.
	MANUAL MOTOR STARTER SWITCH, HORSEPOWER RATED WITH OVERLOADS, PILOT LIGHTED, ENGRAVED NAMEPLATE, FLUSH MOUNTED FINISHED SPACE, SURFACE MOUNTED UNFINISHED SPACE; 48" A.F.F. U.N.O.
	INDOOR SAFETY DISCONNECT SWITCH WITH SIZE AS INDICATED, NON-FUSIBLE, NEMA 1 ENCLOSURE, HEAVY DUTY.
	OUTDOOR FUSIBLE SAFETY DISCONNECT SWITCH WITH SIZE AS INDICATED, FUSE SIZE AS INDICATED WITH REJECTION STYLE FUSE CLIPS, NEMA 3R
	SINGLE POLE WALL SWITCH, 20A-120/277V, FLUSH MOUNTED FINISHED SPACE, SURFACE MOUNTED UNFINISHED SPACE; M.H. 44" A.F.F.
	3-WAY AND 4-WAY WALL SWITCHES, 20A-120/277V, FLUSH MOUNTED FINISHED SPACE, SURFACE MOUNTED UNFINISHED SPACE; M.H. 44" A.F.F.
	LED WALL DIMMER SWITCH 0-10V, FLUSH MOUNTED FINISHED SPACE; M.H. 44" A.F.F., PROVIDE 3 WAY STYLE WHERE INDICATED WITH '3'.
	LOW VOLTAGE DIGITAL WALL SWITCH IN SINGLE GANG BOX, 2-BUTTON ON/OFF, FLUSH MOUNTED, M.H. 44" A.F.F. U.N.O.; nLIGHT #NPODM OR EQUAL.
	LOW VOLTAGE DIGITAL WALL DIMMER SWITCH IN SINGLE GANG BOX, 3-BUTTON, ON/OFF, RAISE/LOWER, FLUSH MOUNTED, M.H. 44" A.F.F. U.N.O.; nLIGHT #NPODM-DX OR EQUAL.
	WALL-PLATE OCCUPANCY SENSOR, DUAL TECHNOLOGY, AUTO ON/TIMED OFF, TIME DELAY OFF SET AT 10 MINUTES, FLUSH MOUNT, M.H. MAXIMUM OF 44" A.F.F.
	WALL PLATE VACANCY SENSOR, DUAL TECHNOLOGY, MANUAL ON/TIMED OFF, TIME DELAY OFF SET AT 10 MINUTES; FLUSH MOUNTED, M.H. 44" A.F.F. U.N.O.
	WALL PLATE VACANCY SENSOR, DUAL TECHNOLOGY, MANUAL ON/TIMED OFF, TIME DELAY OFF SET AT 10 MINUTES, LINE VOLTAGE, 0-10V DIMMER WITH RISE/LOWER BUTTONS, PHOTOCELL, FLUSH MOUNTED, M.H. 44" A.F.F.
	CEILING MOUNTED OCCUPANCY SENSOR, DUAL TECHNOLOGY, LOW VOLTAGE, AUTO ON/TIMED OFF TIME DELAY OFF SET AT 10 MINUTES. PROVIDE NECESSARY POWER PACKS, SLAVE PACKS, ETC. FOR A COMPLETE AND OPERABLE LIGHTING CONTROL SYSTEM.
	RECEPTACLE CIRCUIT BREAKER PANELBOARD; 120/240V-1φ-3W; SEE PANELBOARD SCHEDULE.
	DUPLEX OR DOUBLE DUPLEX RECEPTACLE, GROUNDING TYPE, NEMA 5-20R, 20A-120V, TAMPER RESISTANT 16" A.F.F., FLUSH MOUNTED U.N.O., WHITE BODY WITH MATCHING PLASTIC COVERPLATE.
	GROUND FAULT INTERRUPTER OR GFI PROTECTED DUPLEX OR DOUBLE DUPLEX RECEPTACLE, GROUNDING TYPE, NEMA 5-20R, 20A-120V, TAMPER RESISTANT FLUSH MOUNTED; M.H. 44" A.F.F. U.N.O. WHITE BODY WITH MATCHING PLASTIC COVERPLATE.
	DOUBLE DUPLEX SURGE PROTECTIVE RECEPTACLE, GROUNDING TYPE, NEMA 5-20R, 20A-120V, WITH INDICATOR LIGHT, FLUSH MOUNTED U.N.O., M.H. TO BE FIELD DETERMINED. BLUE BODY WITH MATCHING PLASTIC COVERPLATE.
	WEATHERPROOF GROUND FAULT INTERRUPTER DUPLEX RECEPTACLE, LISTED WEATHER RESISTANT TYPE, GROUNDING TYPE, NEMA 5-20R, 20A-120V, M.H. 24" A.F.F., FLUSH MOUNTED HORIZONTALLY U.N.O., PLASTIC "WHILE IN USE" COVER, WHITE BODY.
	COMMUNICATIONS OUTLET, 2 1/2" DEEP, 4 11/16" SQUARE BOX WITH 1-GANG PLASTER RING. STUB 1" TO ACCESSIBLE CRAWL/BASEMENT SPACE WITH 90° ELBOW AND INSULATED BUSHING, FLUSH MOUNTED, M.H. 16" A.F.F. U.N.O.
	WIRELESS ACCESS POINT COMMUNICATIONS OUTLET, 2 1/2" DEEP, 4 11/16" SQUARE BOX WITH 1-GANG PLASTER RING INSTALLED ABOVE CEILING AS INDICATED, FOR ABOVE CEILING INSTALLATION SURFACE MOUNT ON STRUCTURE ABOVE ACCESSIBLE CEILING. PROVIDE GROMMETED OPENING FOR CABLING.
	SURGE PROTECTION DEVICE PER SPECIFICATIONS.
	POKE-THRU, FULLY RECESSED 8", DUAL SERVICE WITH 2-20A DUPLEX RECEPTACLE AND SPACE/ COMMUNICATIONS BRACKET FOR DATA/COMMUNICATIONS/AV JACKS. 2" CONDUIT BOTTOM HOUSING ASSEMBLY FOR LOW VOLTAGE CABLING, DIE-CAST ALUMINUM COVER ASSEMBLY, COLOR/FINISH SELECTED BY ARCHITECT; WIREMOLD EVOLUTION 8ATC SERIES WITH #8CTCX COVER. VERIFY FINAL LOCATION WITH FURNITURE SUPPLIER, ARCHITECT AND OWNER PRIOR TO ROUGH-IN.
	POKE-THRU, FULLY RECESSED, 4", SINGLE SERVICE WITH 2-20A DUPLEX RECEPTACLES, AND BLANK PLATE, DIE CAST ALUMINUM COVER ASSEMBLY, COLOR/FINISH SELECTED BY ARCHITECT; WIREMOLD EVOLUTION 4ATC SERIES OR EQUAL. VERIFY FINAL LOCATION WITH DENTAL EQUIPMENT SUPPLIER PRIOR TO ROUGH-IN.
	ELECTRIC WATER COOLER RECEPTACLE, GROUND FAULT INTERRUPTER OR GFI PROTECTED, GROUNDING TYPE, NEMA 5-20R, 20A-120V, TAMPER RESISTANT; FLUSH MOUNTED, M.H. 18" A.F.F. U.N.O., COORDINATE FINAL LOCATION WITH P.C.
	RECESSED TELEVISION WALL BOX WITH FLUSH COVER, 1" NEMA 6-20R DUPLEX RECEPTACLE, PROVIDE 3/4" (POWER) AND 1/4" (LOW VOLTAGE) FROM BOX TO ABOVE ACCESSIBLE CEILING SPACE AND INTO CEILING SPACE BELOW, WITH 90° ELBOW AND INSULATED BUSHING FOR DATA/AV CABLING. MOUNTING HEIGHT AS NOTED; FSR #PWB-100 OR ENGINEER APPROVED EQUAL.
	LIGHTING CONTROL PANEL, NETWORK TYPE, 4-30A 120/277V RELAYS, NEMA 1 CABINET, 120V INPUT; nLIGHT # n PANEL 4 OR EQUAL; PROVIDE NECESSARY EMERGENCY BARRIER WHERE REQUIRED
	PHOTOELECTRIC CELL, COMPATIBLE WITH LIGHTING CONTROL PANEL, PROVIDE 1 PER MASTER LIGHTING CONTROL PANEL, MOUNT AT ROOF LINE FACING NORTH.
	LIGHTING CONTROL GATEWAY DEVICE, MOUNTED IN 2 1/2" DEEP, 4" SQUARE BOX, STUB 1" ABOVE ACCESSIBLE CEILING WITH 90° ELBOW AND INSULATED BUSHING, SURFACE MOUNTED, M.H. 48" A.F.F. U.N.O.; nLIGHT #NGWY2 KIT OR EQUAL
	LIGHTING CONTROL RELAY POWER PACK, MOUNT ABOVE ACCESSIBLE CEILING; nLIGHT #NPP16 OR EQUAL
	LIGHTING CONTROL 0-10VDC DIMMING POWER PACK, MOUNT ABOVE ACCESSIBLE CEILING; nLIGHT #NPP16D OR EQUAL
	DRYER RECEPTACLE, GROUNDING TYPE, 30A-125/250V, NEMA 14-30R WITH 5" PIGTAIL AND MATCHING ANGLE CAP; FLUSH MOUNTED, M.H. 42" A.F.F. U.N.O. PROVIDE 3#10 & 1#10G - 3/4" C FEEDER.
	CEILING SPEAKER FURNISHED AND INSTALLED BY OWNER. PROVIDE DATA CABLE AS NOTED.

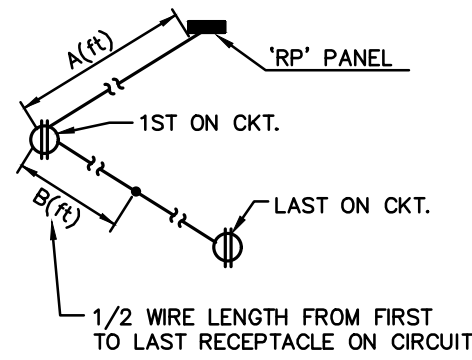
SMOKE/SPRINKLER MONITORING ALARM SYSTEM SYMBOL LEGEND	
SYMBOL	DESCRIPTION
	ALARM PULLSTATION, ADDRESSABLE, SINGLE ACTION; M.H. 44" A.F.F. U.N.O.
	SMOKE DETECTOR, ADDRESSABLE, CEILING MOUNTED, PHOTOELECTRIC TYPE.
	FIRE ALARM COMBINATION VISUAL SIGNAL AND AUDIBLE SIGNAL; M.H. 80" A.F.F. U.N.O.
	SUPERVISORY ADDRESSABLE MODULE, MOUNT IN JUNCTION BOX.
	FIRE PROTECTION SPRINKLER RISER WATER FLOW SWITCH, F.B.F.P., 2#14-1/2"C (SEALTITE) TO AM.
	FIRE PROTECTION SPRINKLER RISER POST INDICATOR VALVE, F.B.F.P., 2#14-1/2"C TO AM.
	FIRE PROTECTION SPRINKLER RISER TAMPER SWITCH, F.B.F.P., 2#14-1/2"C. (SEALTITE) TO AM.
	ELECTRIC FIRE ALARM BELL, F.B.F.P., INSTALLED BY E.C.
	SMOKE/SPRINKLER ALARM PANEL, SURFACE MOUNTED.
	FIRE ALARM DUCT TYPE SMOKE DETECTOR MOUNTED IN RETURN AIR DUCT WITH SAMPLING TUBE, ADDRESSABLE, WITH AUXILIARY CONTACTS WIRED FOR UNIT SHUTDOWN. CONNECT TO BUILDING SPRINKLER SYSTEM MONITORING PANEL.
	DUCT DETECTOR REMOTE ALARM L.E.D.; CEILING MOUNTED BELOW EQUIPMENT, U.N.O.



ABBREVIATIONS	
E.C.	ELECTRICAL CONTRACTOR
F.P.	FIRE PROTECTION CONTRACTOR
G.C.	GENERAL CONTRACTOR
C.M.	CONSTRUCTION MANAGER
M.C.	MECHANICAL CONTRACTOR
T.C.C.	TEMPERATURE CONTROL CONTRACTOR
F.B.X.	FURNISHED BY "XX", INSTALLED BY ELECTRICAL CONTRACTOR
D.E.S.	DOOR EQUIPMENT SUPPLIER
F.B.O.	FURNISHED BY OWNER, INSTALLED BY ELECTRICAL CONTRACTOR
EWC	ELECTRIC WATER COOLER
GFI	GROUND FAULT INTERRUPTER
U.C.	UNDER COUNTER
M.H.	MOUNTING HEIGHT, FLOOR TO BOTTOM OF ITEM
A.F.F.	MOUNTING HEIGHT ABOVE FINISHED FLOOR
A.F.G.	MOUNTING HEIGHT ABOVE FINISHED GRADE
N-3R	NEMA 3R ENCLOSURE
NF	NON-FUSED SAFETY DISCONNECT AND/OR COMBINATION STARTER
NIC	WORK NOT IN CONTRACT
WIC	WORK IN CONTRACT
NL	NIGHT LIGHT CIRCUIT FOR CONTINUOUS OPERATION; PROVIDE BREAKER LOCKING STRAP IN 'ON' POSITION
EM	EMERGENCY CIRCUIT FOR CONTINUOUS OPERATION; PROVIDE BREAKER LOCKING STRAP IN 'ON' POSITION
U.N.O.	UNLESS NOTED OTHERWISE
V.L	VERIFY LOCATION WITH OWNER
WP	WEATHERPROOF ITEM OR DEVICE
VP	VANDLEPROOF COVER
WG	PROVIDE FIXTURE/DEVICE WITH WIRE GUARD

MISCELLANEOUS SYMBOL LEGEND	
SYMBOL	DESCRIPTION
	EQUIPMENT SCHEDULE ITEM, SEE SCHEDULE.
	PLAN NOTE ITEM.
	RISER NOTE ITEM.
	EXISTING DEVICE OR ITEM TO REMAIN.
	FUTURE DEVICE OR ITEM.
	EXISTING DEVICE OR ITEM TO BE REMOVED.

BRANCH CIRCUIT WIRE SIZING TABLE	
FOR 120V-20A BRANCH CIRCUITS ONLY, UNLESS OTHERWISE NOTED	
IF DISTANCE A+B IN FEET IS: (SEE DIAGRAM AT RIGHT)	USE COPPER WIRE IN METALLIC CONDUIT, AWG SIZE AS FOLLOWS ON ENTIRE CIRCUIT AND SIZE CONDUIT ACCORDINGLY:
0' TO 100'	# 12 (MIN.)
100' TO 175'	# 10
175' TO 300'	# 8
300' TO 450'	# 6 (MAX.)



THIS TABLE IS BASED ON AN EVENLY DISTRIBUTED LOAD ALLOWING A 3% VOLTAGE DROP AT LAST OUTLET/FIXTURE; APPLY ACCORDINGLY.

COMMUNICATIONS CONNECTIVITY SCHEDULE	
SYMBOL	DESCRIPTION
	COMMUNICATIONS OUTLET (1-DATA) CONSISTING OF (1) 2-PORT, SINGLE GANG, FLUSH FACEPLATE, AND (1) CAT-6 RJ45 MODULAR JACK WITH (1) CAT-6 4UTP CABLE (BLUE JACKET) ROUTED TO LOCAL IDF/MDF
	COMMUNICATIONS OUTLET (1-ANALOG) CONSISTING OF (1) 2-PORT, SINGLE GANG, FLUSH FACEPLATE, AND (1) CAT-6 RJ45 MODULAR JACK WITH (1) CAT-6 4UTP CABLE (GRAY JACKET) ROUTED TO LOCAL IDF/MDF
	COMMUNICATIONS OUTLET (2-DATA) CONSISTING OF (1) 2-PORT, SINGLE GANG, FLUSH FACEPLATE, AND (2) CAT-6 RJ45 MODULAR JACKS WITH (2) CAT-6 4UTP CABLES (BLUE JACKET) ROUTED TO LOCAL IDF/MDF
	COMMUNICATIONS OUTLET (2-ANALOG) CONSISTING OF (1) 2-PORT, SINGLE GANG, FLUSH FACEPLATE, AND (2) CAT-6 RJ45 MODULAR JACKS WITH (2) CAT-6 4UTP CABLES (GRAY JACKET) ROUTED TO LOCAL IDF/MDF
	WIRELESS ACCESS POINT COMMUNICATIONS OUTLET (1-DATA) CONSISTING OF (1) 2-PORT, SINGLE GANG, FLUSH FACEPLATE, AND (1) CAT-6 RJ45 MODULAR JACK WITH (1) CAT-6 4UTP CABLE (YELLOW JACKET) ROUTED TO LOCAL IDF/MDF. PROVIDE 20"-0" OF COILED CABLE ON J-HOOK (ABOVE AN ACCESSIBLE CEILING, WHERE APPLICABLE), FOR CONNECTION TO OWNER FURNISHED ACCESS POINT.
	SPEAKER OUTLET (1-DATA) CONSISTING OF (1) 2-PORT, SINGLE GANG, FLUSH FACEPLATE, AND (1) CAT-6 RJ45 MODULAR JACK WITH (1) CAT-6 4UTP CABLE (BLUE JACKET) ROUTED TO LOCAL IDF/MDF
	MULTI-MEDIA OUTLET (1-DATA, 1-COAX) CONSISTING OF (1) 2-PORT, SINGLE GANG, FLUSH FACEPLATE, AND (1) CAT-6 RJ45 MODULAR JACK WITH (1) CAT-6 4UTP CABLE, AND (1) F-CONNECTOR WITH (1) RG6 CABLE ROUTED TO LOCAL IDF/MDF AND COAXIAL EQUIPMENT ACCORDINGLY.

LUMINAIRE SCHEDULE											
MARK	DESCRIPTION	LAMP DATA			LUMENS	WATTS	VOLTS	MOUNTING	BASE SPECIFICATION	APPROVED EQUAL	NOTES
		TYPE	CRI	TEMP							
D1	OPEN DOWNLIGHT	LED	80	3000°K	1500	20	120	RECESSED	LITHONIA #LDN6-30/15-L06-WR-MVOLT	PRESSCOLITE PORTOFOLIO LIGHTOLIER	-
E1	EXIT SIGN/EGRESS UNIT COMBINATION, SINGLE FACE	LED	-	-	-	5	120	WALL/CEILING HUNG	LITHONIA #JHQM-LED-R-(HO)	DUAL-LITE CHLORIDE SURE LITES	1
E2	EXIT SIGN SINGLE/DUAL FACE	LED	-	-	-	5	120	WALL/CEILING HUNG	LITHONIA #JLQM-S-W-3-R-120/277-EL N	DUAL-LITE CHLORIDE SURE LITES	1
E3	EGRESS UNIT	LED	-	-	-	5	120	WALL MOUNT 8'-0" A.F.F.	LITHONIA #ELM2-LED	DUAL-LITE CHLORIDE SURE LITES	1
E4	REMOTE EGRESS HEADS (TWIN HEADS)	LED	-	-	-	3	9.6VDC	WALL MOUNT 8'-0" A.F.F.	LITHONIA #ELA-T-QWP-L0309	DUAL-LITE CHLORIDE SURE LITES	4
L1	2'x4' GRID TROFFER VOLUMETRIC	LED	80	3500°K	4000	34	120	LAY-IN	LITHONIA #ZBLT4-40L-ADP-EZ1-LP835	COLUMBIA DAYBRITE METALUX	-
L2	2'x2' GRID TROFFER VOLUMETRIC	LED	80	3500°K	2000	20	120	LAY-IN	LITHONIA #ZBLT2-20L-ADP-EZ1-LP835	COLUMBIA DAYBRITE METALUX	-
L2A	2'x2' GRID TROFFER VOLUMETRIC	LED	80	3500°K	3000	30	120	LAY-IN	LITHONIA #ZBLT2-30L-ADP-EZ1-LP835	COLUMBIA DAYBRITE METALUX	-
L3	4' WALL LIGHT	LED	80	3500°K	2600	35	120	WALL MOUNT 7'-0" A.F.F.	LITHONIA #MVTSL-48IN-MVOLT-30K -90CRI/-BN	COLUMBIA DAYBRITE METALUX	-
L4	4' STRIPLIGHT DROP LENS	LED	80	3500°K	3000	25	120	SURFACE/CHAIN HUNG	LITHONIA #ZL10-L48-SMR-3000LM-FST- MVOLT-35K-80CRI-WH	COLUMBIA DAYBRITE METALUX	-
L5	8' WALL WASH LINEAR	LED	80	3500°K	500LM/ FT	60	120	LAY-IN	PEERLESS #OPRW-G-LOP-BFT-80CRI- 500LMF-MINI-ZT-120-SCT-C041	COLUMBIA DAYBRITE METALUX	-
L6	2' UNDER CABINET LIGHT	LED	90	3500°K	750	11	120	SURFACE UNDER CABINET	LITHONIA #UCEL-24IN-35K-90CRI-WH	COLUMBIA DAYBRITE METALUX	-
L7	2'x4' LAY-IN LED PANEL	LED	80	3500°K	3800	33	120	LAY-IN	DAYBRITE #ZFXP-38L-835-4-DS-UNV-DIM	COLUMBIA LITHONIA METALUX	-
L8	2'x2' LAY-IN LED PANEL	LED	80	3500°K	3000	27	120	LAY-IN	DAYBRITE #ZFXP-30L-835-2-DS-UNV-DIM	COLUMBIA DAYBRITE METALUX	-
W1	EXTERIOR WALL PACK	LED	-	3000°K	3900	35	120	WALL MOUNT	LITHONIA #DSXW1 LED-20C-530-30K-T2M -MVOLT-ELCW	KIM GARDCO MCGRAW EDISON	2,3
W1A	EXTERIOR WALL PACK	LED	-	3000°K	3900	35	120	WALL MOUNT	LITHONIA #DSXW1 LED-20C-530-30K-T4M -MVOLT-ELCW	KIM GARDCO MCGRAW EDISON	2,3
W2	8' EXTERIOR LINEAR SIGN LIGHT	LED	80	3000°K	6487	75	120	WALL MOUNT 12" ABOVE SIGN	SPI #SEWS-101-L30W-30K-FT- 24VDC-8-MCS-18-AN08	-	3,5
S1	AREA LIGHT	LED	80	3000°K	10500	125	120	SEE DETAIL SHEET E201	LITHONIA #DSX1 LED-P4-30K-T4M-MVOLT -SPA-PHMTSD3-HS-XX-GS	KIM GARDCO MCGRAW EDISON	3,6,7
S2	AREA LIGHT	LED	80	3000°K	5500	50	120	SEE DETAIL SHEET E201	LITHONIA #DSX0 LED-P2-30K-T2M-MVOLT -SPA-PHMTSD3-XX	KIM GARDCO MCGRAW EDISON	3,6,7
S3	FLAG/FLOOD LIGHT	LED	80	3000°K	4699	42	120	SEE DETAIL SHEET E201	LITHONIA #DSXF1 LED-P2-30K-MSP-MVOLT -THK-XX	KIM GARDCO MCGRAW EDISON	3

LIGHTING FIXTURE SCHEDULE NOTES -- GENERAL:

- SPECIFICATION NUMBERS ARE MANUFACTURERS SERIES NUMBERS ONLY. IT IS THE RESPONSIBILITY OF THE CONTRACTOR/EQUIPMENT SUPPLIER TO COMPLETE CATALOG NUMBERS TO MATCH THE FIXTURE DESCRIPTION, COMPLIANCE WITH SPECIFICATIONS AND INSTALLATION REQUIREMENTS. APPROVED EQUAL MANUFACTURERS SHALL MEET THE REQUIREMENTS OF THE BASE SPECIFIED FIXTURES IN ALL ASPECTS.
- PROVIDE ALL MOUNTING HARDWARE, BRACKETS, AND FLANGES AS NECESSARY; COORDINATE WITH CEILING TYPES.
- ALL LED DRIVERS TO BE 0-10V DIMMING TO 10% MINIMUM, UNLESS NOTED OTHERWISE.

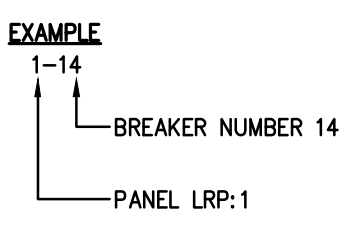
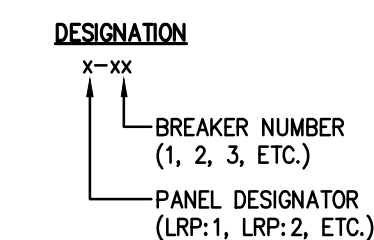
LIGHTING FIXTURE SCHEDULE NOTES -- SPECIFIC:

- PROVIDE 90-MINUTE EMERGENCY/EGRESS BATTERY PACK. WIRE ENTIRE FIXTURE TO LOCAL BRANCH CIRCUIT AHEAD OF LOCAL SWITCHING FOR CONTINUOUS ILLUMINATION AND EMERGENCY OPERATION. PROVIDE HIGH-OUTPUT BATTERY WHERE CONNECTED TO REMOTE EGRESS HEADS.
- PROVIDE 90-MINUTE EMERGENCY/EGRESS BATTERY PACK. WIRE ENTIRE FIXTURE FOR NORMAL SWITCHED OPERATION AND EMERGENCY OPERATION UPON LOSS OF POWER. PROVIDE UNSWITCHED HOT LEAD FOR CEILING SENSING.
- VERIFY COLOR SELECTION WITH OWNER/ARCHITECT.
- CONNECT TO INTERIOR EXIT WITH 2#12-1/2"C.
- MOUNT REMOTE POWER SUPPLY ON INTERIOR WALL ABOVE LAY-IN CEILING.
- FIXTURE TO HAVE AUTOMATIC SCHEDULING OPTION INTEGRAL TO FIXTURE FOR ADJUSTING DIM START POINT TIMES AND DURATION AND INTEGRAL MOTION SENSOR TO REDUCE LUMINAIRE POWER BY 33% WHEN NO ACTIVITY IS DETECTED DURING SCHEDULED TIMES.
- PROVIDE GLARE SHIELD WHERE NOTED WITH 'GS' ON SITE PLAN.

EMERGENCY RESPONDER RADIO COVERAGE

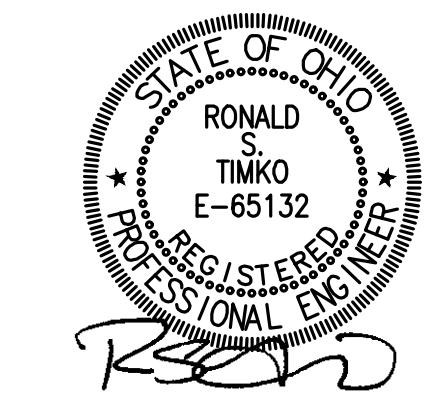
- IN ACCORDANCE WITH 2011 O.B.C. SECTION 915 AND 2011 FIRE CODE SECTION 510, THIS BUILDING RENOVATION SHALL MEET MINIMUM SIGNAL STRENGTH REQUIREMENTS FOR FIRST RESPONDER RADIO COVERAGE. TESTING AND DOCUMENTATION FOR THIS SIGNAL STRENGTH SHALL BE THE RESPONSIBILITY OF THE CONTRACTOR.
- TESTING SHALL BE PERFORMED BY A QUALIFIED TESTING AGENCY IN ACCORDANCE WITH INDUSTRY AND CODE RECOGNIZED STANDARDS.
- TESTING AGENCY/CONTRACTOR SHALL VERIFY FREQUENCY RANGE AND CONTROL CHANNEL(S) TO BE USED FOR CONDUCTING SIGNAL STRENGTH SURVEY WITH ALL APPLICABLE FIRST RESPONDER AGENCIES.
- TESTING SHALL BE PERFORMED AT SUBSTANTIAL COMPLETION WITH ALL BUILDING STEEL, WALLS AND ROOF INSTALLED.
- A FORMAL REPORT WITH RESULTS SHALL BE SUBMITTED TO THE OWNER, ARCHITECT, AND ENGINEER.
- IN THE EVENT THE CERTIFIED TEST RESULTS PROVE THE SIGNAL STRENGTH AS INADEQUATE AS DETERMINED BY THE APPROPRIATE AUTHORITIES, A DISTRIBUTION ANTENNA SYSTEM (OAS) WILL BE INSTALLED UNDER SEPARATE CONTRACT OR CHANGE ORDER.

BRANCH CIRCUIT DESIGNATION LEGEND

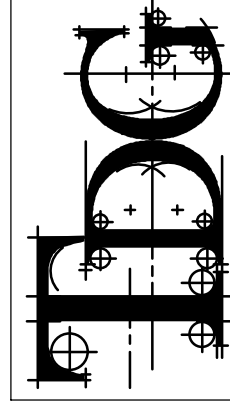


PANEL DESIGNATIONS
 B-X = LRP:B
 1-X = LRP:1
 2A-X = LRP:2A
 2B-X = LRP:2B
 3-X = LRP:3
 Rx = LCP RELAY NUMBER
 M-X = MDP

mda engineering, inc.
 Mechanical and Electrical Engineers
 1415 Holland Road
 Maumee, Ohio 43537
 Phone: (419) 893-3141
 Fax: (419) 893-0687
 mda #18 (01)



TECHNICON DESIGN GROUP INC.
 ARCHITECTURE . ENGINEERING . DESIGN
 1800 N Perry Street, Suite 102
 Ottawa, Ohio 45875 P-419-523-5323
 www.technicondesigngroup.com



BUILDING ALTERATIONS
 HEALTH PARTNERS OF WESTERN OHIO
 TIFFIN COMMUNITY HEALTH CENTER
 1344 W. SENECA AVENUE
 TIFFIN, OHIO 44883

THE CONTENTS OF THIS DRAWING SHALL NOT BE USED OR REPRODUCED BY ANY PERSON, CORPORATION, OR OTHER ENTITY FOR ANY PURPOSE OTHER THAN THE INTENDED USE FOR THIS PROJECT. IF THIS DRAWING IS USED IN PART OR IN ENTIRETY, OR IN ANY MANNER THAT THE PROJECT PROVIDED BY TECHNICON DESIGN GROUP, INC., THE RIGHT IS RESERVED TO MAKE A CLAIM FOR ADDITIONAL ARCHITECTURAL AND/OR ENGINEERING FEES. THEREFORE, NOISE OR REPRODUCTION OF THIS DOCUMENT WITHOUT PRIOR WRITTEN CONSENT OF TECHNICON DESIGN GROUP, INC. IS STRICTLY PROHIBITED.

© 2017 TECHNICON DESIGN GROUP, INC.

DO NOT SCALE FROM DRAWINGS. THE ARCHITECT/ENGINEER SHALL NOT BE RESPONSIBLE FOR ANY QUANTITIES OF MATERIALS AND LOCATIONS OF BUILDING COMPONENTS SCALED FROM THESE DRAWINGS.

ELECTRICAL
 LEGENDS, SCHEDULES
 AND DETAILS

ISSUED DATE
 08-16-18 FOR PERMITS
 08-23-18 FOR BIDDING
 09-27-18 ADDENDUM 2

DRAWN BY: SKM

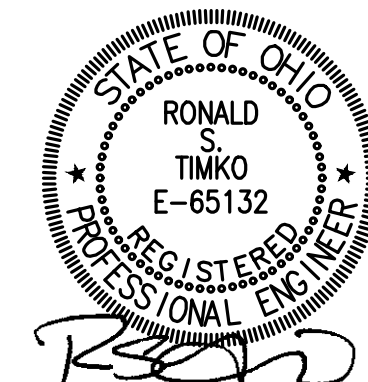
CHECKED BY: RST

DATE: 08/23/18

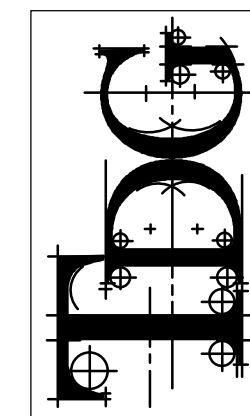
PLOT SCALE: AS NOTED

JOB NO. 72-2351-17

SHEET
 E100
 OF SHEETS



TECHNICON DESIGN GROUP INC.
ARCHITECTURE • ENGINEERING • DESIGN
1800 N Perry Street, Suite 102
Ottawa, Ohio 45875 P-419.523.5323
www.technicondesigngroup.com



BUILDING ALTERATIONS
HEALTH PARTNERS OF WESTERN OHIO
TIFFIN COMMUNITY HEALTH CENTER
1344 W. SENECA AVENUE
TIFFIN, OHIO 44883

THE CONTENTS OF THIS DRAWING SHALL NOT BE USED OR REPRODUCED BY INDIVIDUALS, COMPANIES, OR OTHER ENTITIES FOR ANY PURPOSE OTHER THAN THE INTENDED USE FOR THIS PROJECT. IF THIS DRAWING IS USED IN PART OR IN ENTIRETY, OR IN ANY MANNER THAT THE PROJECT INTENDED TO MAKE A CHANGE FOR ADDITIONAL ARCHITECTURAL, MECHANICAL, ELECTRICAL, OR ENGINEERING FEES, THEREFORE, REUSE OR REPRODUCTION OF THIS DOCUMENT WITHOUT FIRST WRITTEN CONSENT OF TECHNICON DESIGN GROUP, INC. IS STRICTLY PROHIBITED.

© 2017 TECHNICON DESIGN GROUP, INC.

DO NOT SCALE FROM DRAWINGS. THE ARCHITECT/ENGINEER SHALL NOT BE RESPONSIBLE FOR ANY QUANTITIES OF MATERIALS AND LOCATIONS OF BUILDING COMPONENTS SCALED FROM THESE DRAWINGS.

FLOOR
PLANS - LIGHTING

ISSUED DATE

08-16-18 FOR PERMITS
08-23-18 FOR BIDDING
09-27-18 ADDENDUM 2

DRAWN BY: SKM

CHECKED BY: RST

DATE: 08/23/18

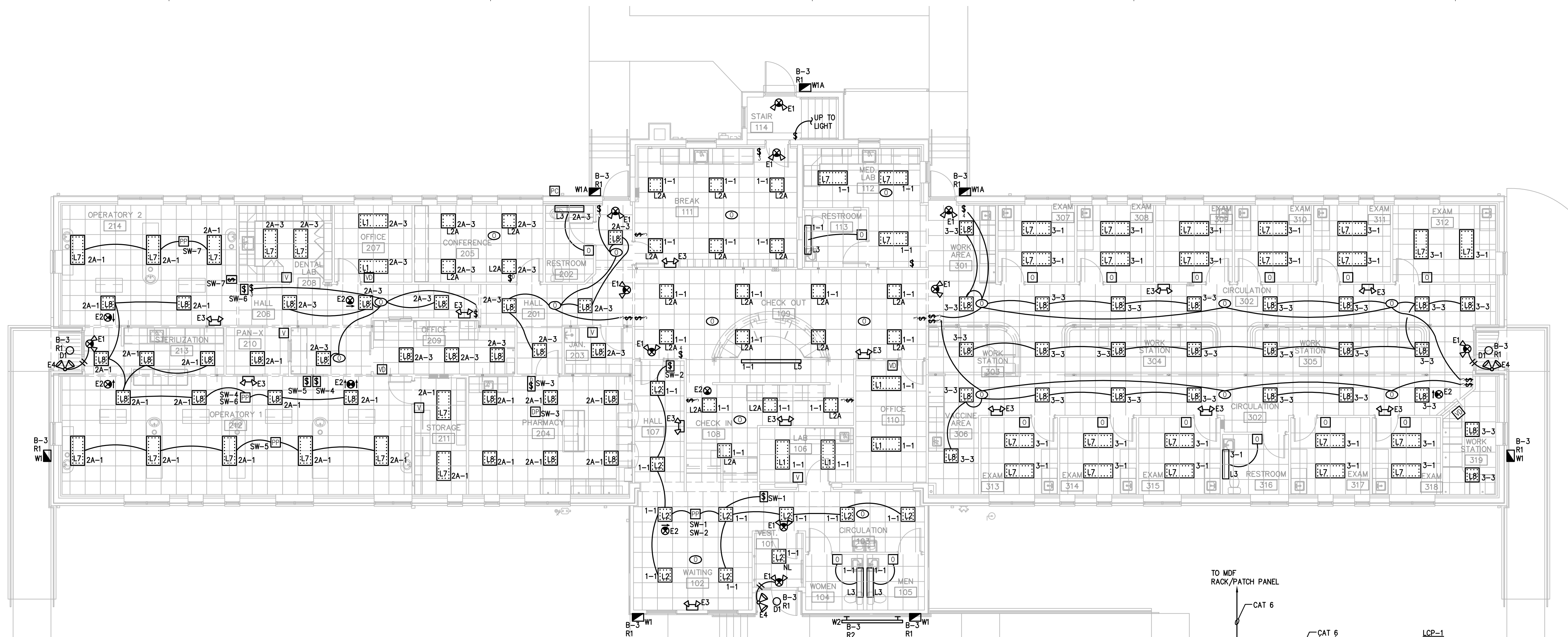
PLOT SCALE: AS NOTED

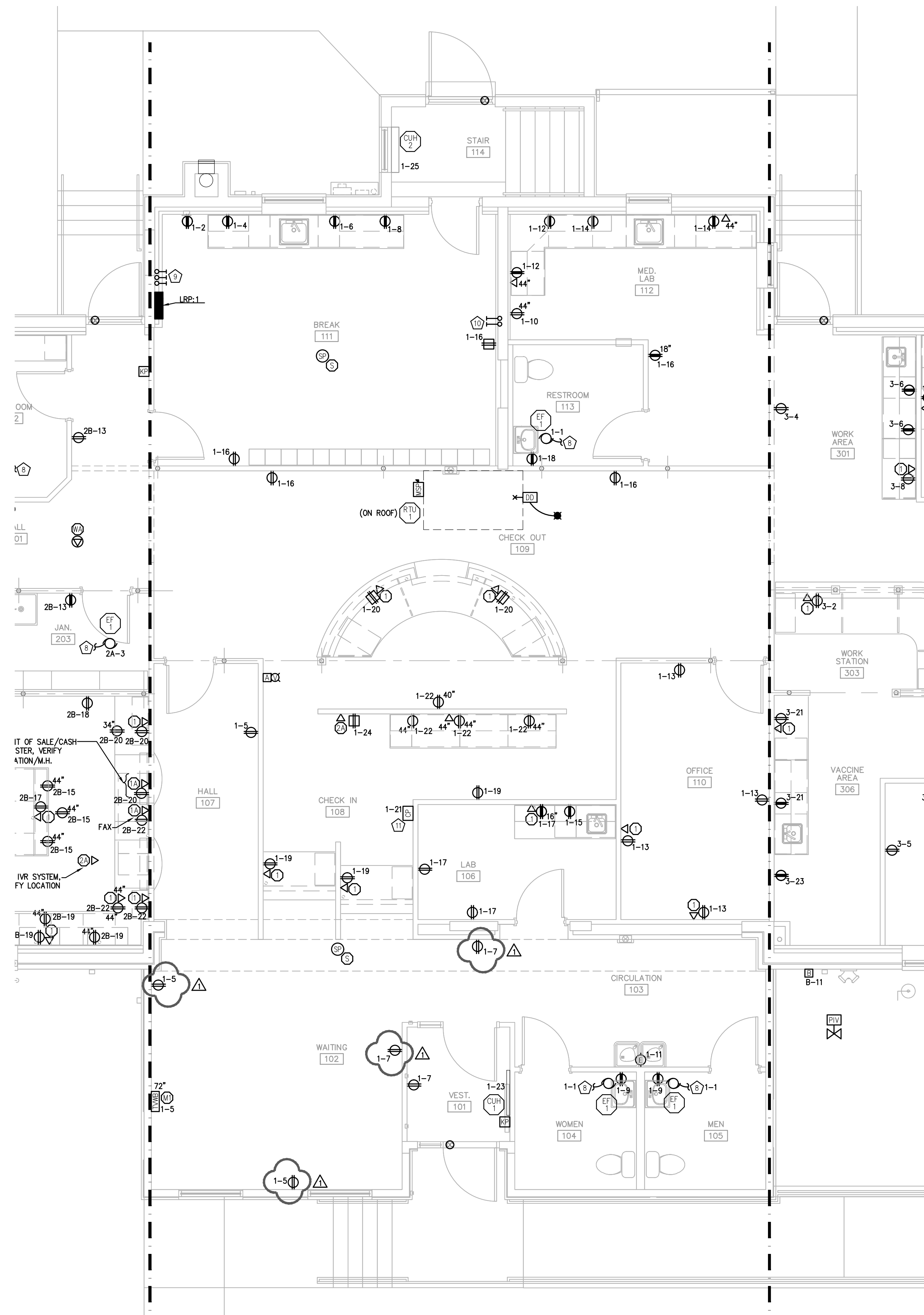
JOB NO. 72-2351-17

SHEET

E300

OF SHEETS



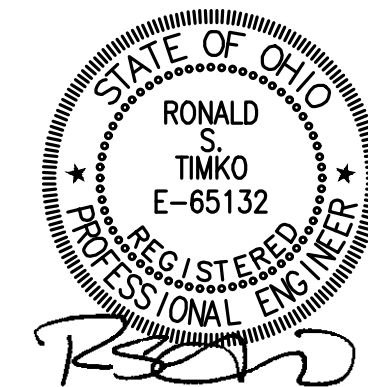


FIRST FLOOR PLAN – SUITE 1 – POWER & SYSTEMS
1/4" = 1'-0"

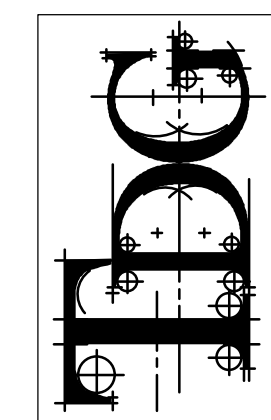
MECHANICAL EQUIPMENT SCHEDULE									
TAG	VOLTAGE	KW	HP	MCA	FLA	MOP	FED FROM	FEEDER (COPPER)	NOTES
RTU 1	240V-3Ø	-	-	31	-	45	MDP	3#6 & 1#10G-3/4"C	-
RTU 2	240V-3Ø	-	-	42	-	50	MDP	3#6 & 1#10G-3/4"C	-
RTU 3	240V-3Ø	-	-	42	-	50	MDP	3#6 & 1#10G-3/4"C	-
EF 1	120V-1Ø	-	FR	-	0.167	-	*	2#12 & 1#12G-3/4"C	*REFER TO FLOOR PLAN
EF 2	120V-1Ø	-	-	-	9.6	-	LRP:B	2#12 & 1#12G-3/4"C	-
SFWR 1	120V-1Ø	-	-	-	2	20ASP	LRP:B	2#12 & 1#12G-3/4"C	-
DCP 1	120V-1Ø	-	-	-	0.23	20ASP	LRP:B	2#12 & 1#12G-3/4"C	-
SP 1	120V-1Ø	-	3/4	-	10.4	20ASP	LRP:B	2#12 & 1#12G-3/4"C	-
SSP 1	240V-3Ø	-	3/4	-	4.1	15A3P	MDP	3#12 & 1#12G-3/4"C	-
DSP 1	240V-3Ø	-	(2)1	-	-	20A3P	MDP	3#12 & 1#12G-3/4"C	-
VAC 1	230V-1Ø	-	3	-	-	20A2P	MDP	2#12 & 1#12G-3/4"C	-
AC 1	230V-1Ø	-	3.2	-	-	20A2P	MDP	2#12 & 1#12G-3/4"C	-
CUR 1	120V-1Ø	0.5	-	-	-	15ASP	LRP:1	2#12 & 1#12G-3/4"C	-
CUR 2	230V-1Ø	2	-	-	-	15A2P	LRP:1	3#12 & 1#12G-3/4"C	-

MECHANICAL EQUIPMENT SCHEDULE NOTES – GENERAL:
A. DISCONNECTS/STARTERS FURNISHED WITH EQUIPMENT UNLESS NOTED/SHOWN ON FLOOR PLANS/OTHERWISE.
B. ROUTE FEEDER TO EQUIPMENT VIA DISCONNECT/STARTER/WFD.

- FLOOR PLAN NOTES:
- 1. WIRING TO THE RECEPTACLES IN THIS AREA SHALL MEET THE REQUIREMENTS OF NEC ARTICLE 317.13.
 - 2. FOR DENTAL CHAIR. VERIFY LOCATION.
 - 3. PROVIDE 120V BRANCH CIRCUIT FOR UTILITY CENTER COORDINATE WITH DENTAL EQUIPMENT SUPPLIER.
 - 4. PROVIDE 2" CONDUIT BETWEEN UTILITY CENTER AND ISLAND PER DENTAL EQUIPMENT SUPPLIER DRAWINGS.
 - 5. PROVIDE 120V-20A BRANCH CIRCUIT FOR CENTER ISLAND EQUIPMENT.
 - 6. PROVIDE 120V-20A BRANCH CIRCUIT FOR CENTER ISLAND CABINET.
 - 7. PROVIDE ROUGH-IN BOXES AND RACEWAYS BETWEEN X-RAY MASTER CONTROL UNIT AND REMOTE BUTTONS PER DENTAL EQUIPMENT SUPPLIER DRAWINGS.
 - 8. CONNECT EXHAUST FAN TO LIGHTS IN ROOM.
 - 9. 3-3" CONDUIT STUBS IN WALL FROM BASEMENT TO ABOVE LAY-IN CEILING WITH BUSHINGS ON BOTH ENDS; FOR DATA/COMMUNICATIONS CABLING.
 - 10. 2-2" CONDUIT STUBS IN WALL FROM BASEMENT TO ABOVE LAY-IN CEILING WITH BUSHINGS ON BOTH ENDS; FOR SECURITY CABLING BY OTHERS.
 - 11. PROVIDE 120V TO TEMPERATURE CONTROL PANEL FURNISHED AND INSTALLED BY M.C. VERIFY/COORDINATE LOCATION, MOUNTING HEIGHT, AND CONNECTION REQUIREMENTS.



TECHNICON DESIGN GROUP INC.
ARCHITECTURE . ENGINEERING . DESIGN
1800 N Perry Street, Suite 102
Ottawa, Ohio 45875 P:419.523.5323
www.technicondesigngroup.com



BUILDING ALTERATIONS
HEALTH PARTNERS OF WESTERN OHIO
TIFFIN COMMUNITY HEALTH CENTER
1344 W. SENECA AVENUE
TIFFIN, OHIO 44883

THE CONTENTS OF THIS DRAWING SHALL NOT BE USED OR REPRODUCED BY INDIVIDUALS, CORPORATIONS, OR OTHER ENTITIES FOR ANY PURPOSE OTHER THAN THE INTENDED USE FOR THIS PROJECT. IF THIS DRAWING IS USED IN PART OR IN ENTIRETY, OR IN ANY MANNER, THE USER IS RESPONSIBLE TO MAKE A CLAIM FOR ADDITIONAL ARCHITECTURAL, ENGINEERING, AND/OR ENGINEERING FEES, DETERMINE, REUSE OR REPRODUCTION OF THIS DOCUMENT WITHOUT THE WRITTEN CONSENT OF TECHNICON DESIGN GROUP, INC. IS STRICTLY PROHIBITED.

© 2017 TECHNICON DESIGN GROUP, INC.

DO NOT SCALE FROM DRAWINGS. THE ARCHITECT/ENGINEER SHALL NOT BE RESPONSIBLE FOR ANY QUANTITIES OF MATERIALS AND LOCATIONS OF BUILDING COMPONENTS SCALED FROM THESE DRAWINGS.

ENLARGED FIRST FLOOR PLAN - SUITE 2 POWER AND SYSTEMS

ISSUED DATE

08-16-18 FOR PERMITS
08-23-18 FOR BIDDING
09-27-18 ADDENDUM 2

DRAWN BY: SKM

CHECKED BY: RST

DATE: 08/23/18

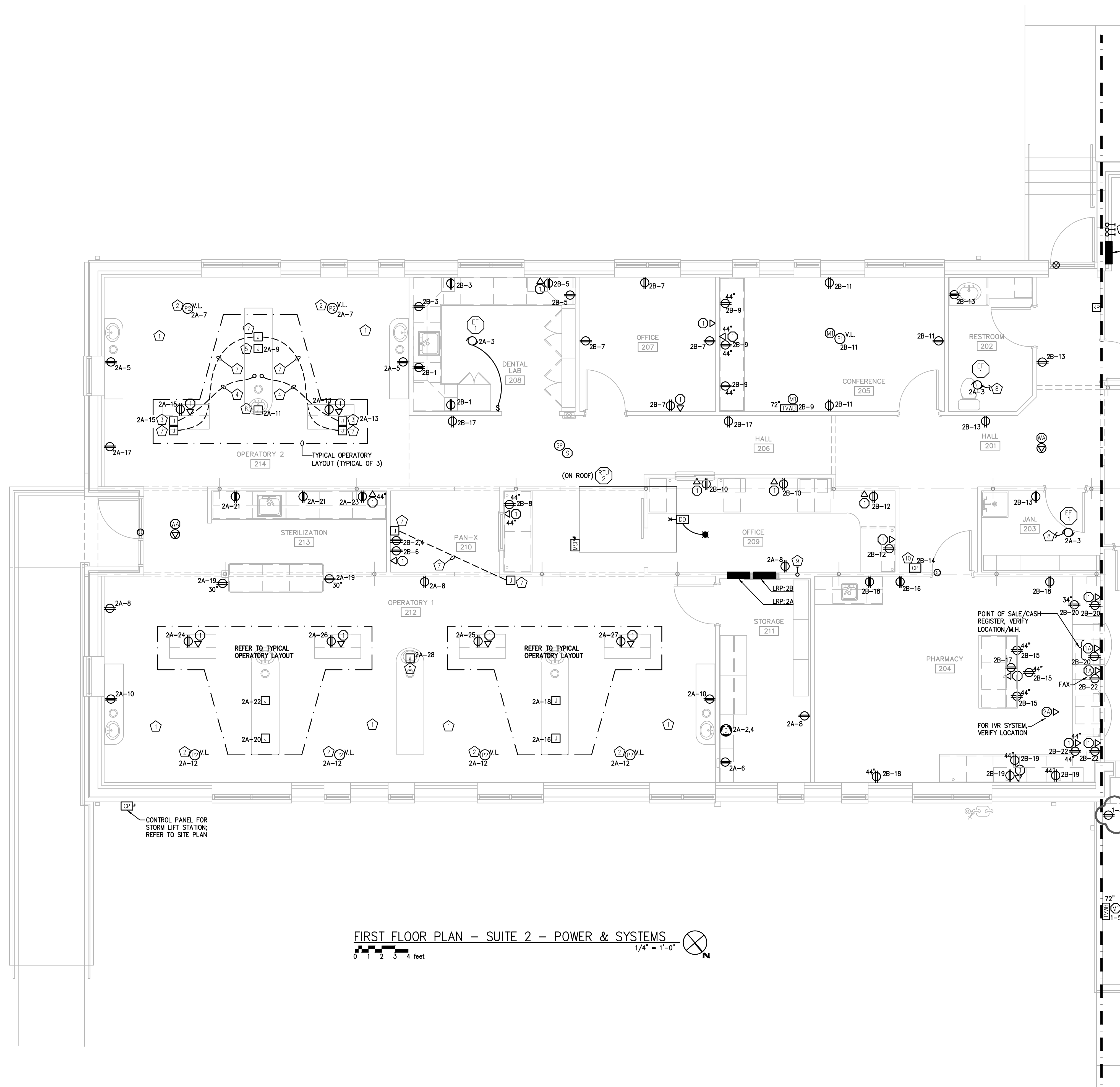
PLOT SCALE: AS NOTED

JOB NO. 72-2351-17

SHEET

E402

OF SHEETS



FIRST FLOOR PLAN - SUITE 2 - POWER & SYSTEMS
0 1 2 3 4 feet
1/4" = 1'-0"

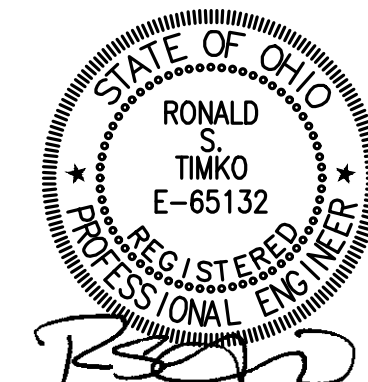
GENERAL NOTE:

E.C. TO VERIFY FINAL ROUGH-IN REQUIREMENTS, LOCATIONS, MOUNTING HEIGHTS, BRANCH CIRCUIT CONNECTIONS, RACEWAYS, BOXES, ETC. FOR DENTAL SUITE WITH DENTAL EQUIPMENT SUPPLIER DRAWINGS.

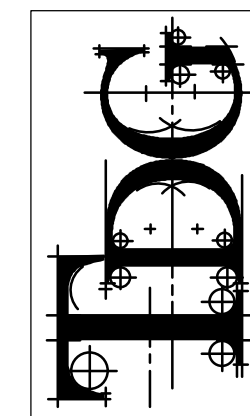
FLOOR PLAN NOTES:

1. WIRING TO THE RECEPTACLES IN THIS AREA SHALL MEET THE REQUIREMENTS OF NEC ARTICLE 517.13.
2. FOR DENTAL CHAIR. VERIFY LOCATION.
3. PROVIDE 120V BRANCH CIRCUIT FOR UTILITY CENTER COORDINATE WITH DENTAL EQUIPMENT SUPPLIER.
4. PROVIDE 2" CONDUIT BETWEEN UTILITY CENTER AND ISLAND PER DENTAL EQUIPMENT SUPPLIER DRAWINGS.
5. PROVIDE 120V-20A BRANCH CIRCUIT FOR CENTER ISLAND EQUIPMENT.
6. PROVIDE 120V-20A BRANCH CIRCUIT FOR CENTER ISLAND CABINET.
7. PROVIDE ROUGH-IN BOXES AND RACEWAYS BETWEEN X-RAY MASTER CONTROL UNIT AND REMOTE BUTTONS PER DENTAL EQUIPMENT SUPPLIER DRAWINGS.
8. CONNECT EXHAUST FAN TO LIGHTS IN ROOM.
9. 1-3" CONDUIT STUB IN WALL FROM CRAWL SPACE TO ABOVE LAY-IN CEILING WITH BUSHINGS ON BOTH ENDS; FOR DATA/COMMUNICATIONS CABLING.
10. PROVIDE 120V TO TEMPERATURE CONTROL PANEL FURNISHED AND INSTALLED BY M.C. VERIFY/COORDINATE LOCATION, MOUNTING HEIGHT, AND CONNECTION REQUIREMENTS.

mda engineering, inc.
Mechanical and Electrical Engineers
1415 Holland Road
Maumee, Ohio 43537
Phone: (419) 893-5141
Fax: (419) 893-0687
mde #118101



TECHNICON DESIGN GROUP INC.
ARCHITECTURE . ENGINEERING . DESIGN
1800 N Perry Street, Suite 102
Ottawa, Ohio 45875 P-419.523.5323
www.technicondesigngroup.com



BUILDING ALTERATIONS
HEALTH PARTNERS OF WESTERN OHIO
TIFFIN COMMUNITY HEALTH CENTER
1344 W. SENECA AVENUE
TIFFIN, OHIO 44883

THE CONTENTS OF THIS DRAWING SHALL NOT BE USED OR REPRODUCED BY INDIVIDUALS, CORPORATIONS, OR OTHER ENTITIES FOR ANY PURPOSE OTHER THAN THE INTENDED USE FOR THIS PROJECT. IF THIS DRAWING IS USED IN PART OR IN ENTIRETY, OR IN ANY MANNER THAT THE PROJECT PROVIDED BY TECHNICON DESIGN GROUP, INC., THE USER IS RESPONSIBLE TO MAKE A CHANGE FOR ANY ADDITIONAL, ARCHITECTURAL, AND/OR ENGINEERING FEES. THEREFORE, REUSE OR REPRODUCTION OF THIS DOCUMENT WITHOUT PRIOR WRITTEN CONSENT OF TECHNICON DESIGN GROUP, INC. IS STRICTLY PROHIBITED.

© 2017 TECHNICON DESIGN GROUP, INC.

DO NOT SCALE FROM DRAWINGS. THE ARCHITECT/ENGINEER SHALL NOT BE RESPONSIBLE FOR ANY QUANTITIES OF MATERIALS AND LOCATIONS OF BUILDING COMPONENTS SCALED FROM THESE DRAWINGS.

**ENLARGED FIRST
FLOOR PLAN - SUITE 3
POWER AND
SYSTEMS**

ISSUED DATE

08-16-18 FOR PERMITS
08-23-18 FOR BIDDING
09-27-18 ADDENDUM 2

DRAWN BY: SKM

CHECKED BY: RST

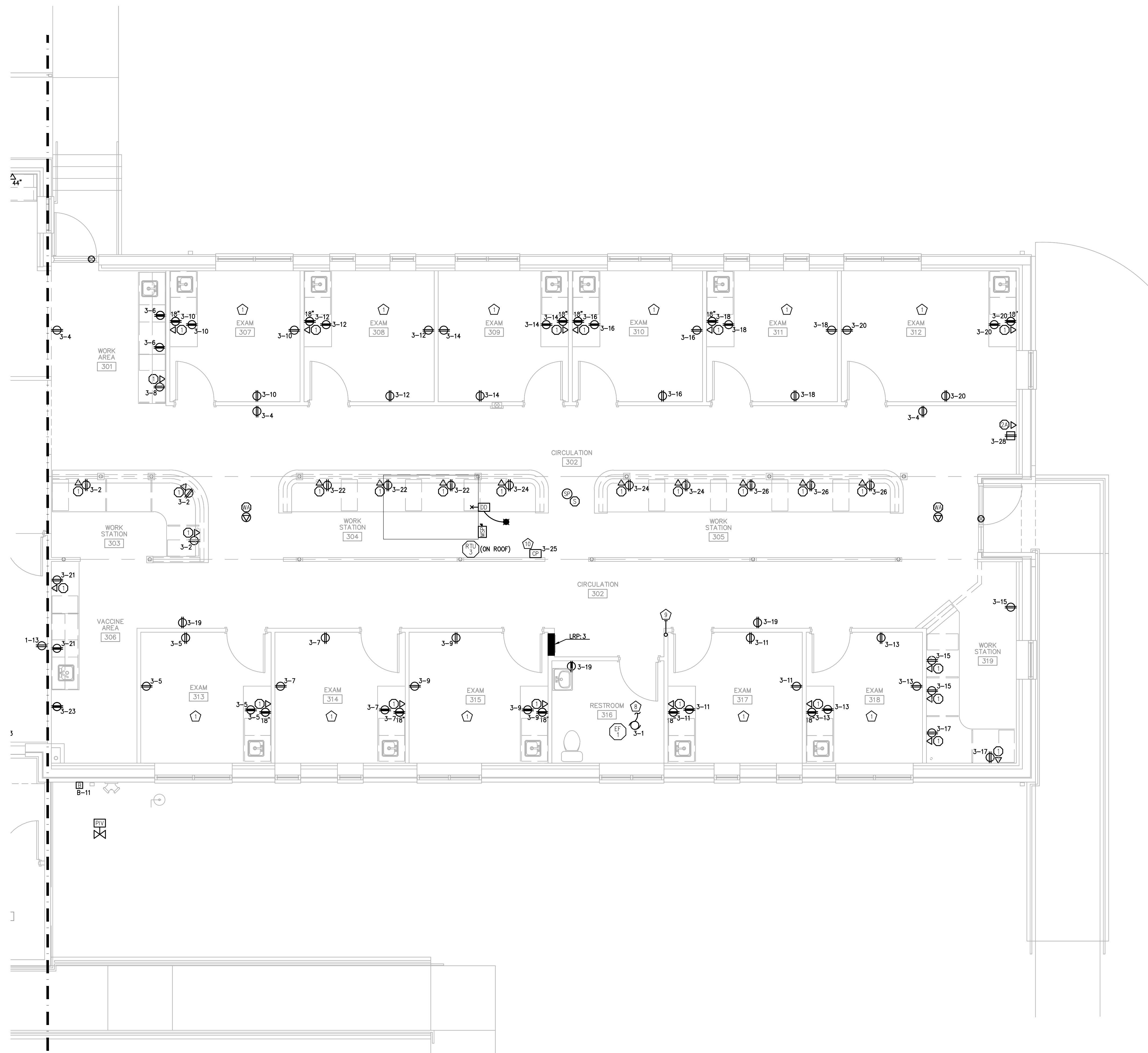
DATE: 08/23/18

PLOT SCALE: AS NOTED

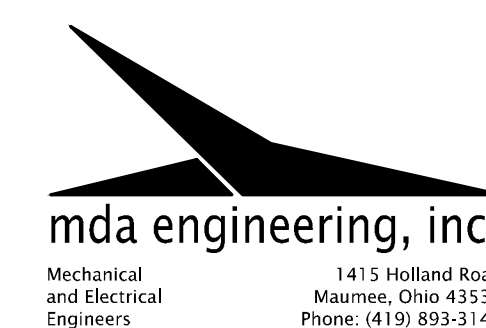
JOB NO. 72-2351-17

SHEET
E403

OF SHEETS

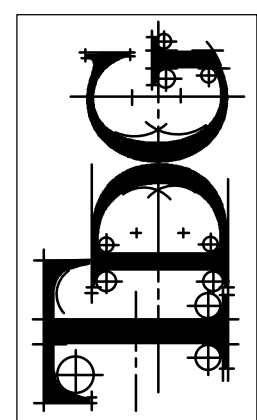


FIRST FLOOR PLAN - SUITE 3 - POWER & SYSTEMS
1/4" = 1'-0"





TECHNICON DESIGN GROUP INC.
ARCHITECTURE • ENGINEERING • DESIGN
1800 N Perry Street, Suite 102
Ottawa, Ohio 45875 P-419-523-5323
www.technicondesigngroup.com



BUILDING ALTERATIONS
HEALTH PARTNERS OF WESTERN OHIO
TIFFIN COMMUNITY HEALTH CENTER
1344 W. SENECA AVENUE
TIFFIN, OHIO 44883

THE CONTENTS OF THIS DRAWING SHALL NOT BE USED OR REPRODUCED BY INDIVIDUALS, CORPORATIONS, OR OTHER ENTITIES FOR ANY PURPOSE OTHER THAN THAT INTENDED FOR THIS PROJECT. IF THIS DRAWING IS USED IN PART OR IN ENTIRETY, OR IN ANY MANNER, THE USER IS RESPONSIBLE TO MAKE A CHANGE FOR ADDITIONAL ARCHITECTURAL, MECHANICAL, ELECTRICAL, OR ENGINEERING FEES. THEREFORE, REUSE OR REPRODUCTION OF THIS DOCUMENT WITHOUT PRIOR WRITTEN CONSENT OF TECHNICON DESIGN GROUP, INC. IS STRICTLY PROHIBITED.

© 2017 TECHNICON DESIGN GROUP, INC.

DO NOT SCALE FROM DRAWINGS. THE ARCHITECT/ENGINEER SHALL NOT BE RESPONSIBLE FOR ANY QUANTITIES OF MATERIALS AND LOCATIONS OF BUILDING COMPONENTS SCALED FROM THESE DRAWINGS.

ELECTRICAL
RISER DIAGRAM
AND PANEL SCHEDULES

ISSUED DATE
08-16-18 FOR PERMITS
08-23-18 FOR BIDDING
09-27-18 ADDENDUM 2

DRAWN BY: SKM

CHECKED BY: RST

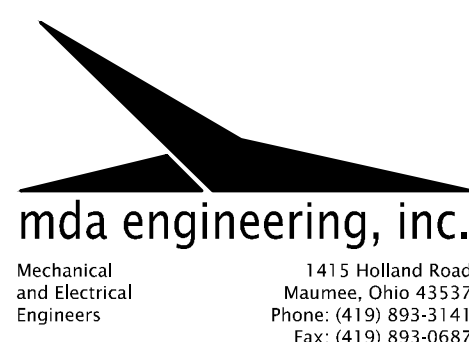
DATE: 08/23/18

PLOT SCALE: AS NOTED

JOB NO. 72-2351-17

SHEET
E500
OF SHEETS

OF SHEETS



1415 Holland Road
Maumee, Ohio 43537
Phone: (419) 893-5141
Fax: (419) 893-0687
mda #118101

PANEL: MDP (EXISTING)										LOCATION: MECH 002									
NOTES	LOAD DESCRIPTION	CIRCUIT BREAKER	#A	#B	#C	BRAND CREDIT No.	#A	#B	#C	CIRCUIT BREAKER	LOAD DESCRIPTION	NOTES							
	SPARE	15ASP	0			1	2	0		20ASP	SPARE								
3	RTU-1	45A3P	4299		4299	5	6	8690		125A2P	LRP:1	3							
			4299		5824	7	8	8290											
3	RTU-2	50A3P			5824	9	10		12669	125A2P	LRP: 2A	3							
			5824			11	12												
3	RTU-3	50A3P			5824	13	14	13476		5688	LRP: B								
			5824		5824	17	18												
3	SSP-1	15A3P			569	19	20	2888		25A3P									
					569	21	22		6320	125A2P	LRP: 2B	3							
						23	24												
	SPACE					25	26	6630		8596	125A2P	LRP: 3	3						
						27	28												
	SPACE					29	30			20ASP	SPARE								
						31	32			20ASP	SPARE								
						33	34												
						35	36												
						37	38												
						39	40												
3	DSP-1	20A3P			1165	1165	41	42		20ASP	SPARE								
					1165					20ASP	SPARE								
4	VAC-1	20A2P			1955	1955	43	44											
					1955	45	46												
						47	48												
4	AC-1	20A2P	2000			49	50			100A3P	SPARE								
			2000			51	52												
	SPARE	20ASP				53	54			20ASP	SPARE								
	SPARE	20ASP				55	56			20ASP	SPARE								
						57	58			150A2P	SPARE								
	SPARE	20ASP				59	60												
	SPARE	20ASP				61	62			150A2P	SPARE								
						63	64												
	SPARE	20ASP				65	66			20ASP	SPARE								
						67	68			20ASP	SPARE								
						69	70			20ASP	SPARE								
3	SPD	60A3P				71	72			20ASP	SPARE								
SUB-TOTAL PER #			19681		#A	40740						60421							
				21636	#B	41933						21636							
				19636	#C							61569							
MOUNTING		SURFACE								TOTAL CONNECTED (VA)		143626							
LUGS OR CIRCUIT BREAKER		400A M.C.B.								TOTAL CONNECTED (AMPS)		346.5							
BUS RATING (AMPERES) & TYPE		400A - CU								FEEDER: SEE ONE LINE DIAGRAM									
VOLTAGE		120/240V-3ø-4W (HI-LEG "B")								OPTIONS:									

PANEL: LRP:B (EXISTING)										LOCATION: MECH 002									
NOTES	LOAD DESCRIPTION	CIRCUIT BREAKER	#A	#B	BRAND CREDIT No.	#A	#B	BRAND CREDIT No.	LOAD DESCRIPTION	NOTES									
2	SITE LIGHTING/FLAG POLE	20ASP	500		1	2			20ASP	SPARE									
2	EXTERIOR BUILDING LIGHTING	20ASP	423	3	4														
2	SUMP PUMP SP-1	20ASP	1248	5	6	1000			20ASP	RECEPT - TELBOARD	3								
2	RECEPT - BASEMENT	20ASP	540	7	8	1000			20ASP	RECEPT - TELBOARD	3								
2	FURNACE F-1	20ASP	1000	9	10	1152			20ASP	BASEMENT	3								
2	BELL	20ASP	300	11	12				20ASP	SEC	3								
1,2	SSAP	20ASP	500	13	14	288			20ASP	GENERAL OCC-1	3								
					15	16			20ASP	LIGHTING - BASEMENT									
					17	18													
					19	20													
					21	22													
					23	24													
	SUB-TOTAL PER #		3248	1283	2420	1625			TOTAL PER #		5668								
											2888								
	MOUNTING	SURFACE							TOTAL CONNECTED (VA)		8556								
	LUGS OR CIRCUIT BREAKER	125A M.C.B.							TOTAL CONNECTED (AMPS)		35.7								
	BUS RATING (AMPERES) & TYPE	225A - CU							FEDER. SEE ONE LINE DIAGRAM										
	VOLTAGE	120/240V-1ø-3W							OPTIONS:										

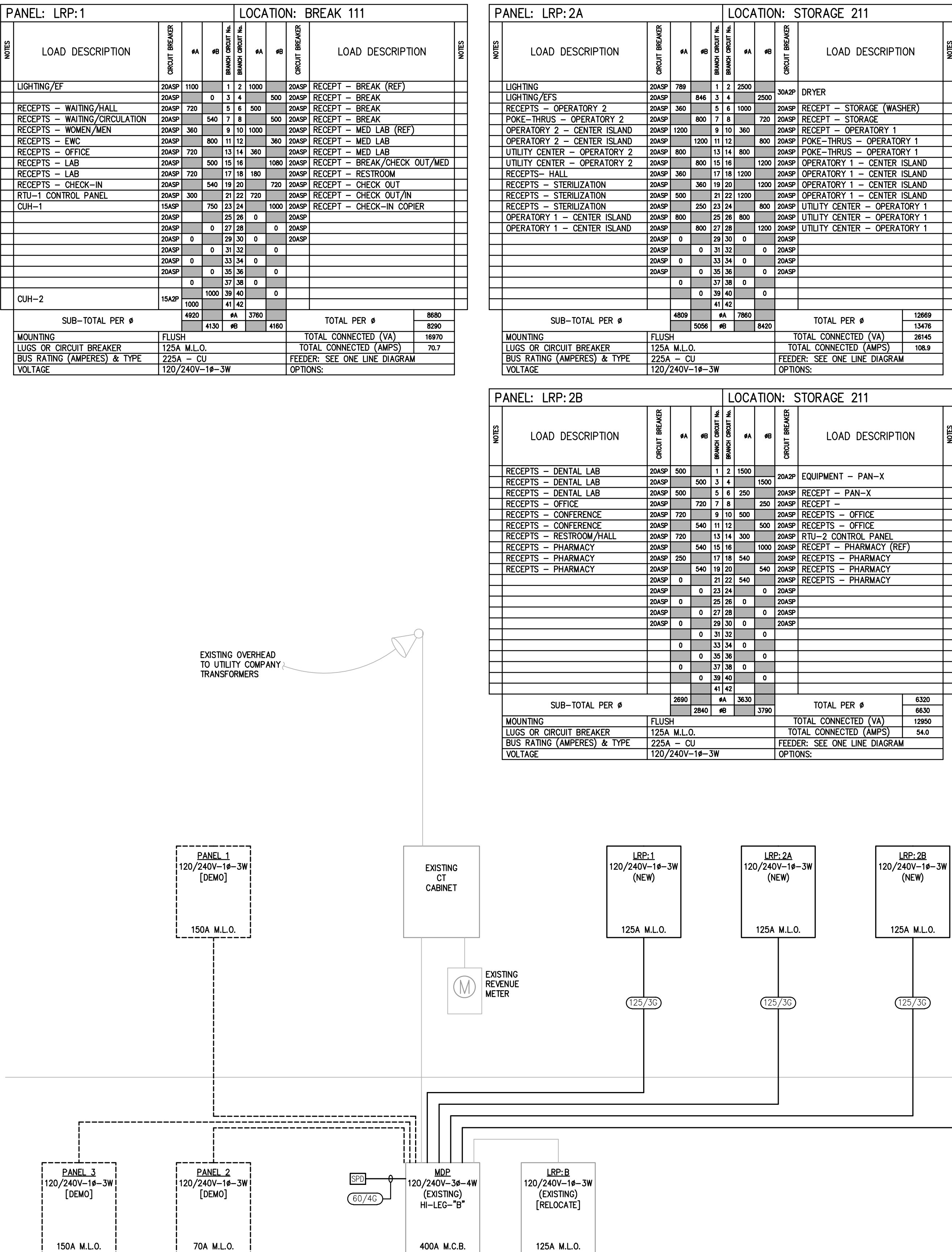
FEEDER SCHEDULE-ALUMINUM	
125/3ø	3ø/0 & 1ø4ø-1 1/4" C
60/4ø	3ø4 & 1ø6ø-1" C

1ST FLOOR

BASEMENT

ELECTRICAL RISER DIAGRAM - 120/240V-3ø-4W (DELTA HI-LEG "B" SYSTEM)

NO SCALE



EXISTING OVERHEAD
TO UTILITY COMPANY
TRANSFORMERS